

TOWN OF
Evansville
WYOMING



Transportation Plan

Michael Baker
INTERNATIONAL



LOGAN SIMPSON



TOWN OF EVANSVILLE TRANSPORTATION PLAN

Prepared for:

Casper Area MPO
200 North David Street, Room 203
Casper WY, 82601
307-235-8255

Town of Evansville
235 Curtis Street
Evansville, WY 82636
307-234-6530

Prepared by:

Michael Baker International
165 S. Union Blvd, Suite 201
Lakewood, CO 80228
720-514-1100 (p)

Logan Simpson
123 North College Avenue, Suite 206
Fort Collins, Colorado 80524
970-449-4100 (p)

July 2017



EXECUTIVE SUMMARY

Why Plan?

Infrastructure is the backbone of a community but it requires planning to ensure that adequate infrastructure is provided to support the community. Evansville has an advantage in that it is largely in the early stages of development with large expanses of land that have yet to be developed, which essentially provides a “blank slate” from which to develop their future roadway network, and an opportunity to establish the rules by which this network and new development should be implemented. This Plan guides the Town to ensure that existing and anticipated future needs are met, transportation infrastructure is properly planned for, and funding can be identified prior to needs emerging.

Transportation Vision

The transportation vision is based on concepts of multi-modal transportation for all people, and a focus on safety and quality of life. Based on input received from the public and officials, the following is the Transportation Vision for Evansville.

“Evansville will have planned, multi-modal transportation infrastructure and policies to improve mobility, connectivity and access for all people. Adequate funding mechanisms will be sought to implement planned projects as needs emerge. The infrastructure will enhance the quality of life in the community, improve economic vitality, and promote improved safety.”

Key Policy Framework Concepts & Plan Highlights

This plan was created as a guide for the citizens and government officials of Evansville, with their input and desire to improve the community. The planning process started with an evaluation of the existing barriers to transportation, travel patterns, and street and bike/pedestrian networks. Understanding the Transportation Vision for Evansville, the plan outlines opportunities and strategies to achieve the desired transportation network, such as connectivity, functional classification, land use & urban form, block configuration, roadway spacing/block size, access management, mix of land uses and modes, and complete streets.

Residents identified areas within the transportation network that need improvement, and this plan identifies recommendations to address those needs. In an effort to implement those recommendations and achieve the Town’s vision, identification of funding sources will be necessary.



Recommendations

This plan outlines recommendations to improve the transportation network. The following are project/action lists for short term and long term implementation of the plan.

Short Term Prioritized List of Projects/Actions

- Adopt a Major Streets Plan
- Investigate additional options to traverse railroad (completed)
- Metro Road extension connecting to Cemetery Road and Craig Thomas Blvd extension (underway)
- Craig Thomas Blvd extension to Howard Street Extension in Bar Nunn
- Adopt an Active Transportation Plan
- Modify Town Code to require construction of sidewalks/paths with development
- Modify Town Code to incorporate key concepts of connectivity, functional classification, block configuration, and access management
- Eliminate offset of Luker Ln and Lathrop Rd through road realignment or other measures
- Consider the widening of Curtis Street
- Evaluate pavement sufficiency and widths for trucks along Lathrop Rd and Yellowstone Highway
- Widen Evans Street to accommodate trucks
- Update the road maintenance plan (underway)

Long Term Prioritized List of Projects/Actions

- Evaluate the Yellowstone Highway/Craig Thomas Blvd intersection for signalization (WYDOT)
- Signalize the Lathrop Road/Curtis Street intersection (WYDOT)
- Amoco Road extension to Cole Creek Road
- Platte Park Road extension to Amoco Road extension
- Bryan Evansville Road from Bryan Stock Trail to Platte Park Road
- Connect 5th Street and Mustang Trail parallel to the river, from Platte Park Road to Cole Creek Road
- First Street extension to Craig Thomas Blvd
- Wildcat Road from Blackmore Road to Hat Six Road
- Mystery Bridge Road from E Yellowstone Hwy south to E/W connector
- N/S connector between Wildcat Road and Yellowstone Hwy, west of Mystery Bridge Road
- E/W connector south of Wildcat Road, north of I-25, from Wildcat Road to Hat Six Road
- Evans Street extension to Cemetery Road
- 7th Street extension to Evans Street extension
- Connector northeast of the Amoco Road extension/Craig Thomas Blvd intersection, connecting the two roadways
- Develop a gateway theme along Curtis Street and Hat Six Road, north of I-25

Acknowledgements

TOWN STAFF

Mayor

Phil Hinds

Council Members

Ernest Blackford

Jennifer Sorenson

Joe Knop

Jory Delinger

Town Planner

Scott Radden

CONSULTANT TEAM

MICHAEL BAKER INTERNATIONAL

Chuck Huffine, AICP, PE, PTOE

Jennifer Carpenter

Katie Schwarz

LOGAN SIMPSON

Bruce Meighen, AICP

Megan Moore, AICP

Kristina Kachur, AICP

PLANNING AND ZONING COMMISSION

Shaun Harshman

Marvin Rone

Jim Kaup

Greg Schuetz

Stan Beld

MPO STAFF

Liz Becher

Pam Jones

Constance Lake

Dan Adcock, Public Works
Director

THE COMMUNITY

A sincere thanks to all of the residents that provided their time and feedback to help Evansville establish their vision!



Table of Contents

	PAGE
CHAPTER 1: INTRODUCTION	
Overview.....	1
Scope and Purpose of Transportation Plan.....	1
CHAPTER 2: EXISTING CONDITIONS	
Overview.....	1
Review of Existing Plans/Zoning Ordinance.....	2
Existing Land Use & Zoning	4
Transportation Network.....	5
CHAPTER 3: FUTURE VISION	
Future Land Use Plan.....	9
Future Traffic Forecasts and Operations.....	10
Citizens Perspective.....	12
Opportunities.....	15
Recommendations.....	20
Major Streets Plan.....	21
CHAPTER 4: MOVING FORWARD	
Implementation.....	23
Strategies.....	24

Figures

	PAGE
Figure 1: Existing Town Boundary and Road Network.....	2
Figure 2: Existing Zoning.....	4
Figure 3: Existing Levels of Service.....	6
Figure 4: Existing Trail Network.....	7
Figure 5: Existing Bus Service.....	8
Figure 6: Future Land Use Plan.....	9
Figure 7: Future Levels of Service.....	10
Figure 8: Major Streets Plan.....	22

Appendices

- A. Public Input

CHAPTER 1: INTRODUCTION

Overview



According to the American Community Survey, 2,836 people resided in Evansville in 2015, an increase of 20.5% since the year 2000 (the US Census stated 2,255 people resided in Evansville in 2000). This amount of growth has a significant impact on government resources, and the local water, sewer, and transportation infrastructure. While the town is small, the resulting benefit is that

there remain large portions of vacant land that can be planned to accommodate and guide the next influx of development before it occurs.

Scope and Purpose of Transportation Plan

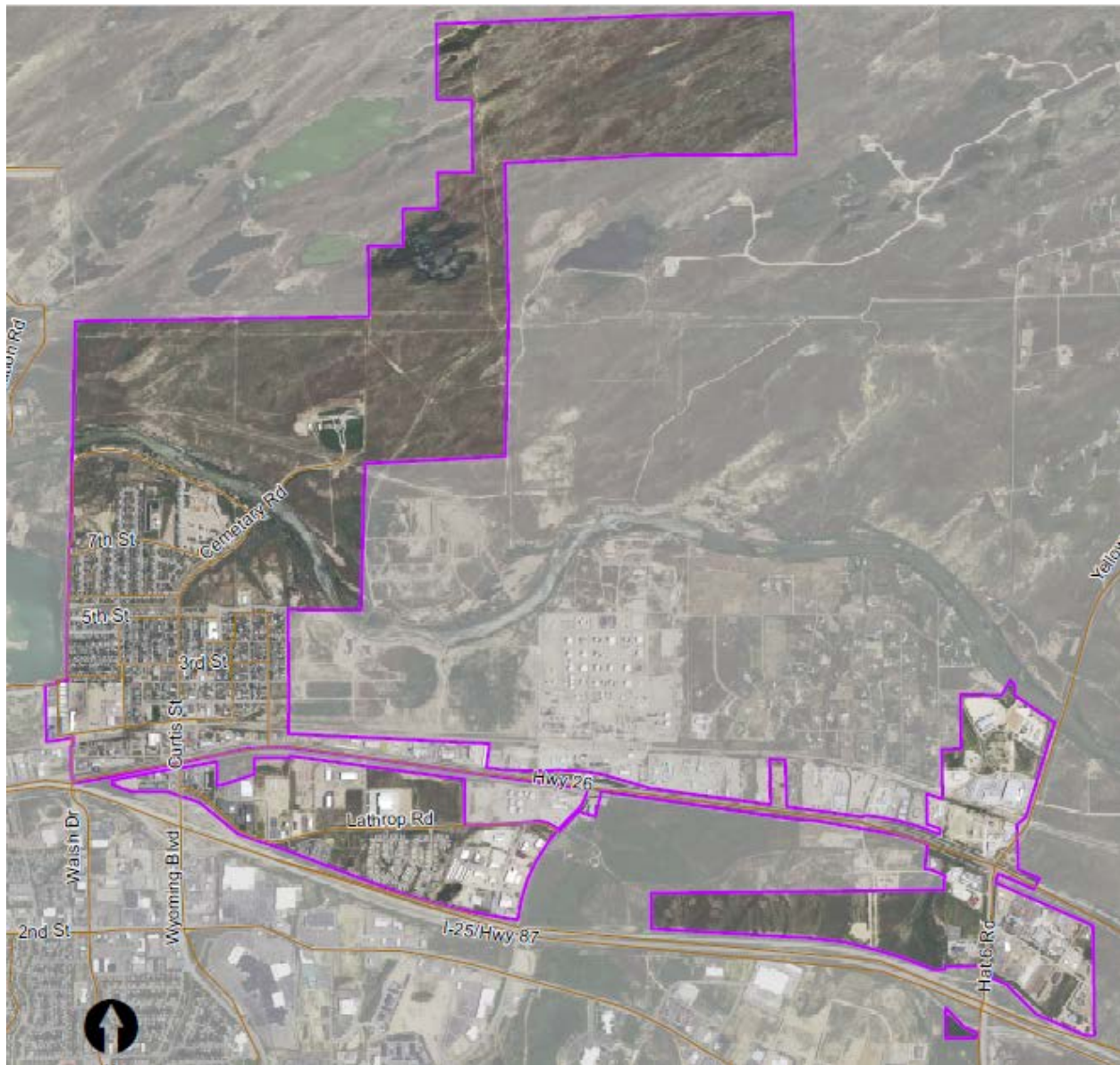
The purpose of this Plan is to evaluate the existing transportation network and provide recommendations for improvement. Many of the recommendations outlined in this plan come directly from the residents it serves, while others are based on best practices and industry standards.

CHAPTER 2: EXISTING CONDITIONS

Overview

A review of existing conditions gives us a basis from which to start planning for the future. This section evaluates the existing land uses, existing plans/ordinances, and the existing transportation network. The review was based on existing data and studies, a field tour of the town, and input gained from MPO staff, elected officials, and the public. Figure 1 presents a map of the Town of Evansville with roadways.

Figure 1 - Existing Town Boundary and Road Network



Review of Existing Plans/Zoning Ordinance

Long Range Transportation Plan

The 2040 Casper Area LRTP included an evaluation of transportation in the Town of Evansville. The Plan considered all modes and evaluated level of service based on the existing and future land use plans. The results of that evaluation led to a list of recommended new roadways within the Town of Evansville. These recommendations have been incorporated within this Plan.

2005 Community Development Plan

This Plan gives an overview of the land use, housing, and transportation situation in 2005. At the time, the major transportation concern was the fact that the three major accesses to the developed areas of Evansville can all be blocked by a single train, restricting any access into or out of Evansville, including emergency access. While Curtis Street extends to the north, over the river, it is a private road owned by the Veterans Administration and couldn't be used as an emergency route. A long term emergency access to the west was proposed from Iron Street through the JTL area to Bryan Stock Trail. Additional transportation improvements outlined in the Community Development Plan include:

- Paving/repaving Platte Park Road (completed), Curtis Street, Iron Street, Williams Street
- Paving Gold Street to address drainage problems (partially completed)
- Reconstructing Sierra Vista, Rio Vista and Cielo Vista (completed)
- Extending Texas Street to Lierd Lane
- Overlay the west end of Lathrop Road with widening of the road in the future
- Connect the existing paths in the park, along the river, south along Platte River Park Road and Western to East Yellowstone, to connect to the Rails to Trails trail along the old Chicago and Northwestern rail line
- New pathways for the elementary school area and former lagoon site

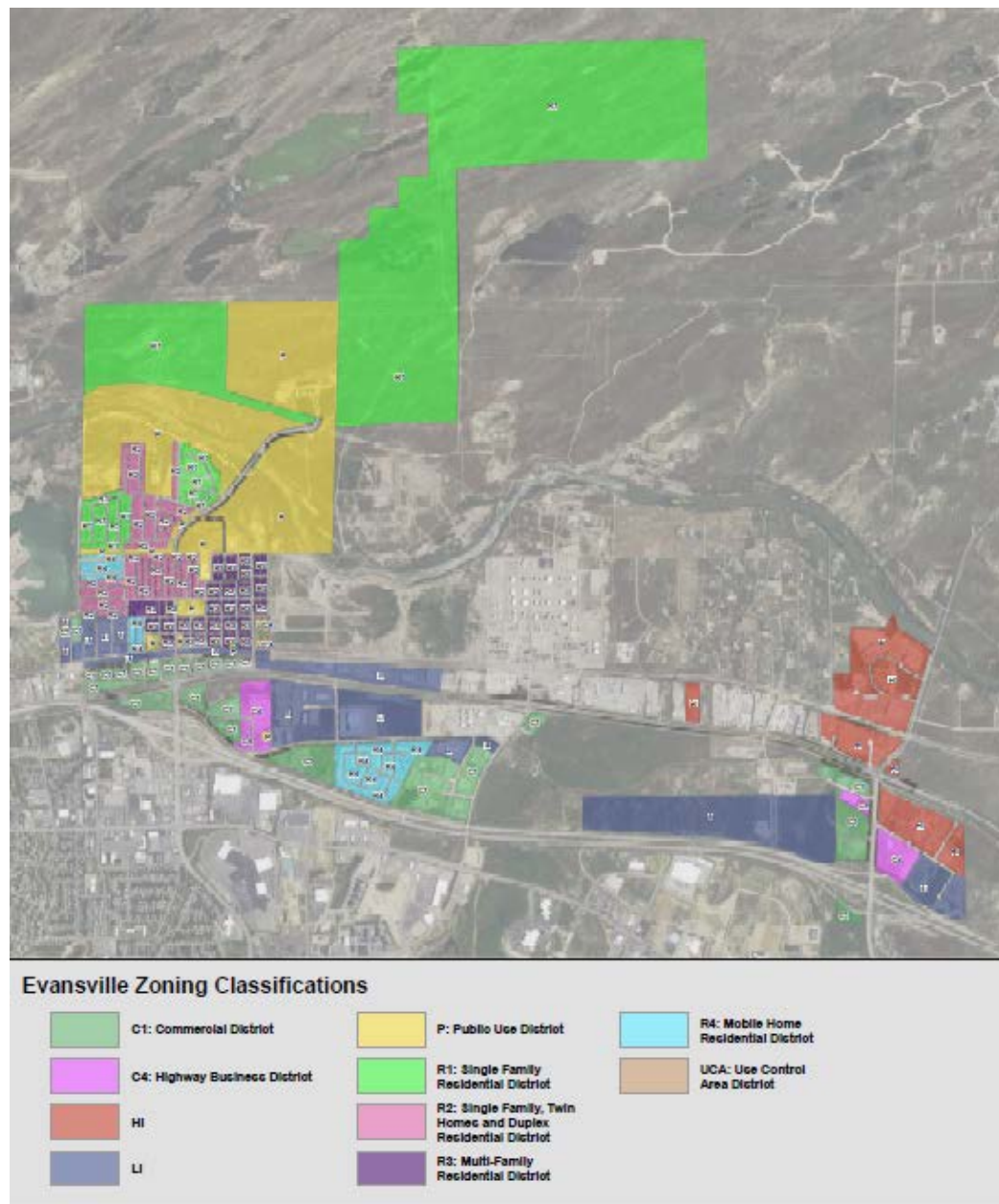
Zoning Ordinance

The current Town Code makes consideration for on-street parking, shared parking, submittal of traffic studies with site plans, and sidewalk/roadway standards associated with recreational vehicle areas, however, the Town should consider additional requirements based on the key concepts for an adequate roadway network such as connectivity, functional classification, block configuration, and access management outlined within this Plan. Additionally, it would benefit the Town to include roadway typical sections that accommodate all modes and standards for the development of sidewalks/paths and pedestrian amenities to ensure consistency in new development. Finally, ways to fund transportation improvements through the site plan approval process should be investigated.

Existing Land Use & Zoning

The existing zoning classification for Evansville includes a mix of industrial, residential, and general business. According to the 2012 Survey of Business Owners, existing land uses include 434 businesses, while the American Community Survey estimated that Evansville has 1,221 houses. This is a ratio of approximately 3 homes to every business. Figure 2 illustrates the existing zoning.

Figure 2 - Existing Zoning



Transportation Network

Barriers

The largest barrier and biggest impact to the transportation network in Evansville is the lack of regulations outlining standards by which the transportation network should be developed.

Travel Patterns

Since Yellowstone Highway and I-25 function as the only regional roads accessing Evansville, and Curtis Street is the primary route connecting to the regional roads, the majority of traffic uses these three roads to enter/exit Evansville. There are no arterial roadways on the north, west or east sides of Evansville, and only two north/south connections that extend from Evansville over the railroad tracks and I-25, connecting to Casper. As development occurs, these existing access points will begin to experience congestion, leading to a desire for alternate routes into and out of town.

A critical issue brought to our attention was the response time for emergency services. With only three access points that can simultaneously be blocked by a single train, providing access into/out of town, concerns were voiced regarding emergency access into and out of town.

Streets

The developed portion of Evansville provides an adequate grid of streets to serve development but access into/out of the town can be restricted when trains pass through the town, resulting in the need for an emergency access into/out of town.

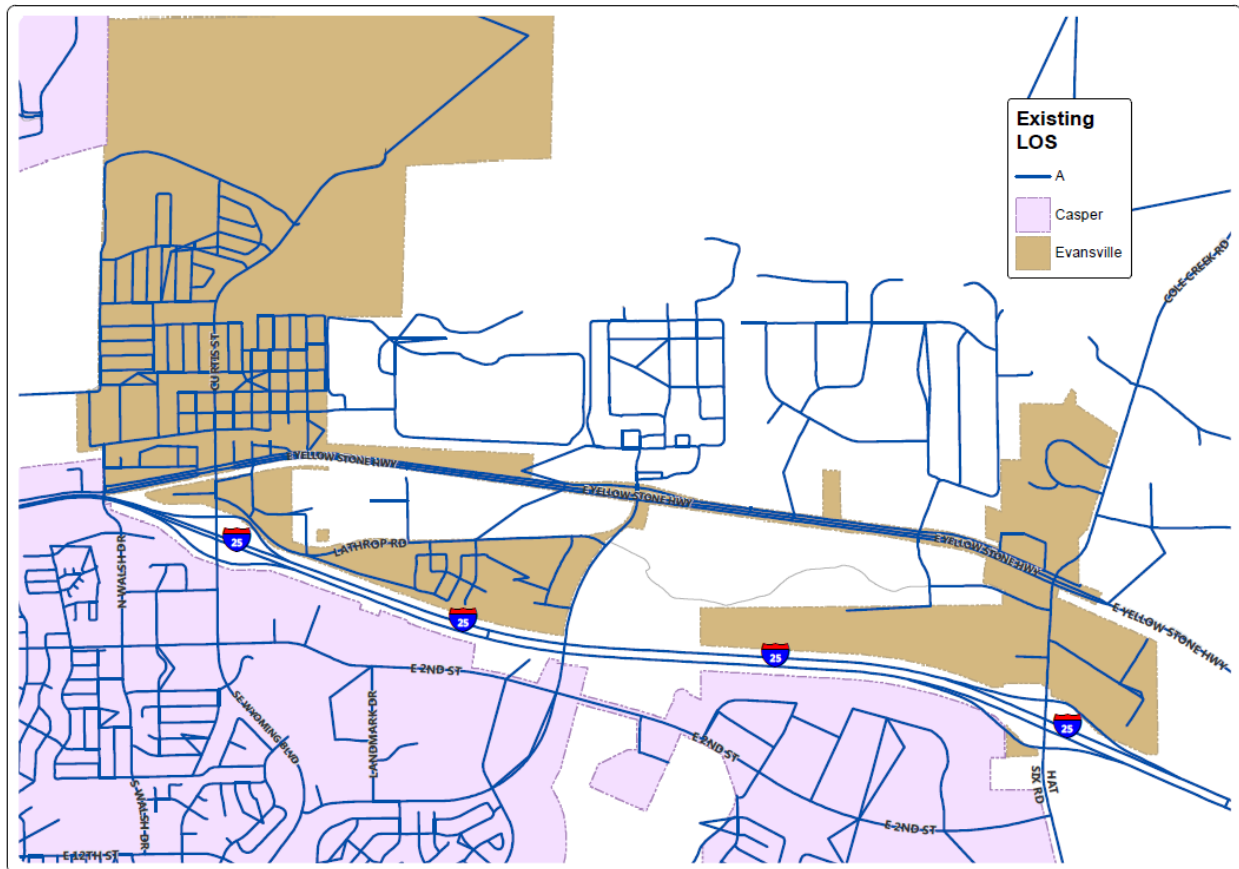
Much of Evansville is separated by either the river, the railroad, or major roadways (Yellowstone Highway and I-25). Providing a system of north/south collector roadways connecting to Casper would help connect and distribute traffic from these areas once developed.

Residents mentioned the concern of congestion at the Curtis Street/Yellowstone Highway intersection, however, at present, traffic is not producing sufficient peak hour traffic volumes to result in unacceptable levels of service.

The yellow lines on roads were mentioned as a concern by citizens.

Figure 3 presents the existing levels of service for the streets in and around Evansville. All roads currently operate at Level Of Service (LOS) A, which means traffic flows at or above the posted speed limit and all motorists have complete mobility between lanes.

Figure 3 - Existing Levels of Service

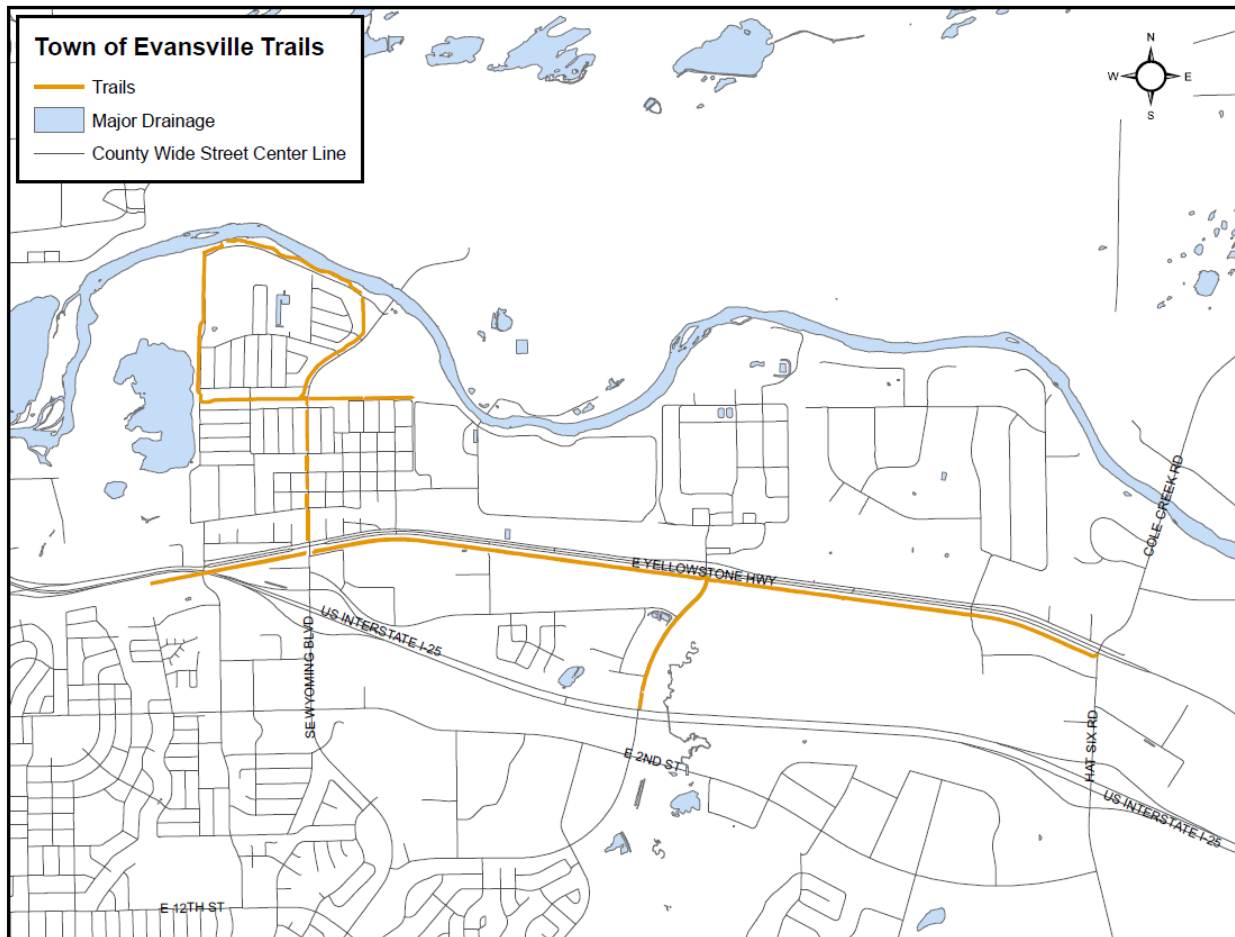


Bike & Pedestrian

Residents of Evansville feel that biking and walking are important, as evidenced in the percentage of people that bike/walk within the community. The Evansville survey asked what modes people use to get around town. Based on the survey, 26.7% of residents use both a car and a bike to get around their community, while 33.3% use both a car and walk. It is important that the Town focus on ways to improve/expand the existing sidewalk and path network to embrace this healthy alternative.

The existing trail network is shown in Figure 4.

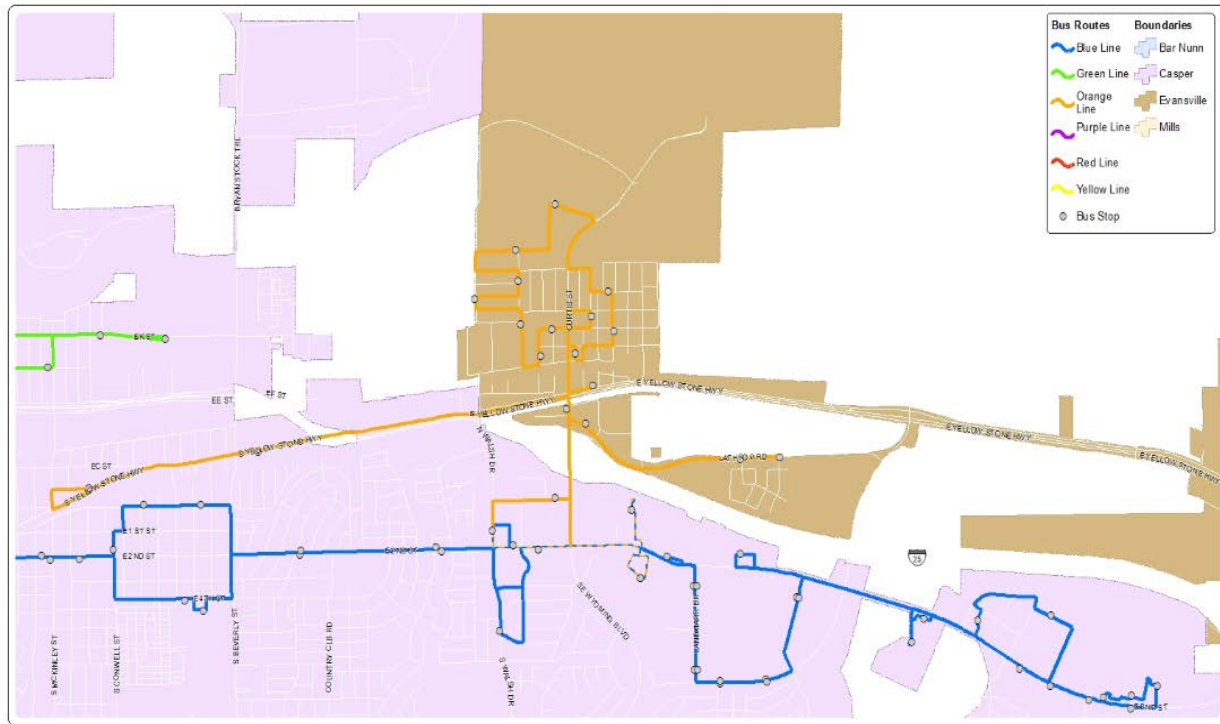
Figure 4 - Existing Trail Network



Transit

Evansville is currently served by the orange route for The Bus every day except for Saturday and Sunday (Figure 5). Based on a survey of residents, 43% of residents stated that they were familiar with The Bus and the available services, 43% know about the bus, but don't know specific details about the route or services, while approximately 14% either are not familiar or didn't know Evansville is serviced by The Bus.

Figure 5 - Existing Bus Service



Existing Needs

The Evansville Land Use & Transportation workshop was held on October 27, 2016. This workshop helped to engage community officials and MPO staff about existing transportation needs. Based on this discussion, plus input from surveys and in-person interviews, the following list provides an overview of the finalized existing needs:

- ✓ Better access to the south across the railroads and I-25
- ✓ Railroad bypass road
- ✓ Access road connecting Cemetery Road to Metro Road. City received clearance to fix the portion on state land. Would need funding for design.
- ✓ Congestion reduction/better truck access to Curtis Street from Lathrop Rd
- ✓ Put in missing sidewalks. Application for grant funding was submitted but withdrawn because advice was that it would be a futile effort.
- ✓ Regional pathway connections
- ✓ Road striping and repairs
- ✓ Western Street & Yellowstone Highway: subdivisions will cause this to be more congested. WYDOT has plans to install traffic signals.

CHAPTER 3: FUTURE VISION

Future Land Use Plan

During the Staff and Community Workshop, held on October 27th, 2016, the existing land use plan was evaluated and based on known/desired developments and transportation changes that meet the Transportation Vision of Evansville. The following changes resulted:

- ✓ Area located northeast of where Cemetery Rd ends will be dedicated for residential development
- ✓ Area east of Leavitt St, south of the North Platte River, will be designated as Business Park Light Industrial
- ✓ Area between E Lathrop Rd and Yellowstone-Cole Creek Rd, just north of I-20 and south of the railroad tracks, will be dedicated to light industrial development
- ✓ Open space area north and northwest of Cemetery Rd will be designated for residential development out to the community boundary
- ✓ Areas between S Curtis St and Hat Six Rd, above I-25, will remain a mix of Commercial and Industrial

Figure 6 illustrates the future land use plan.

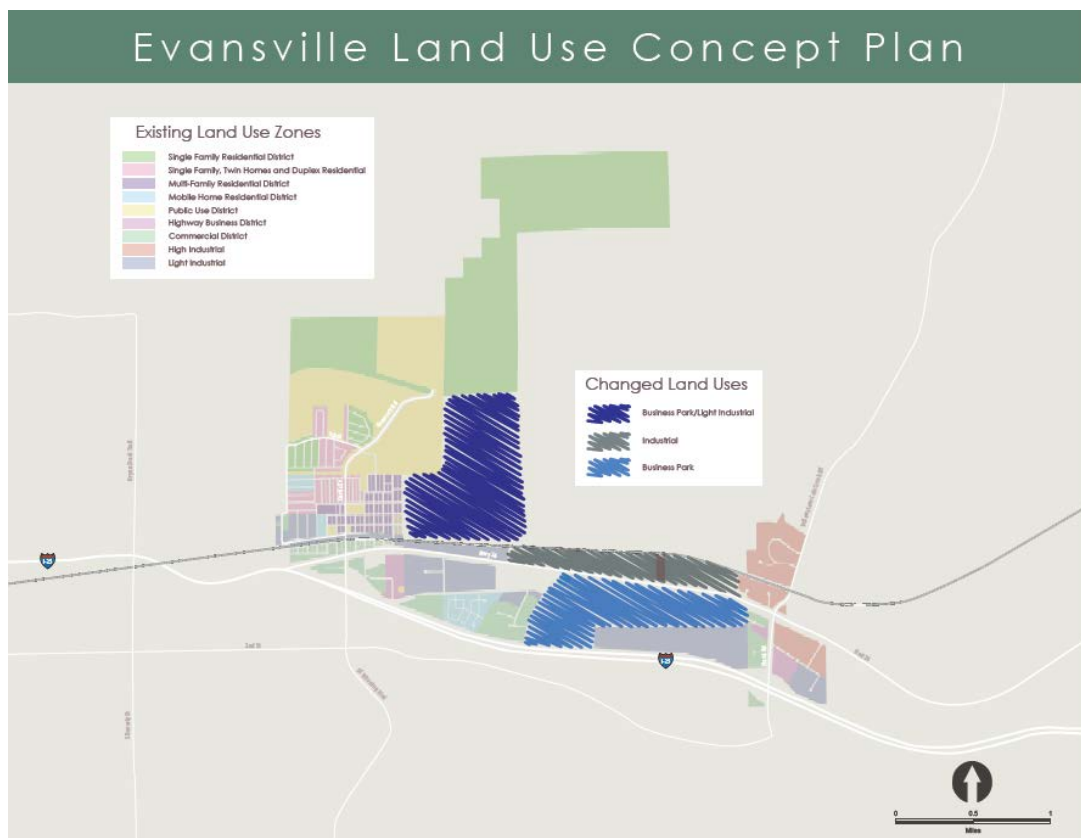
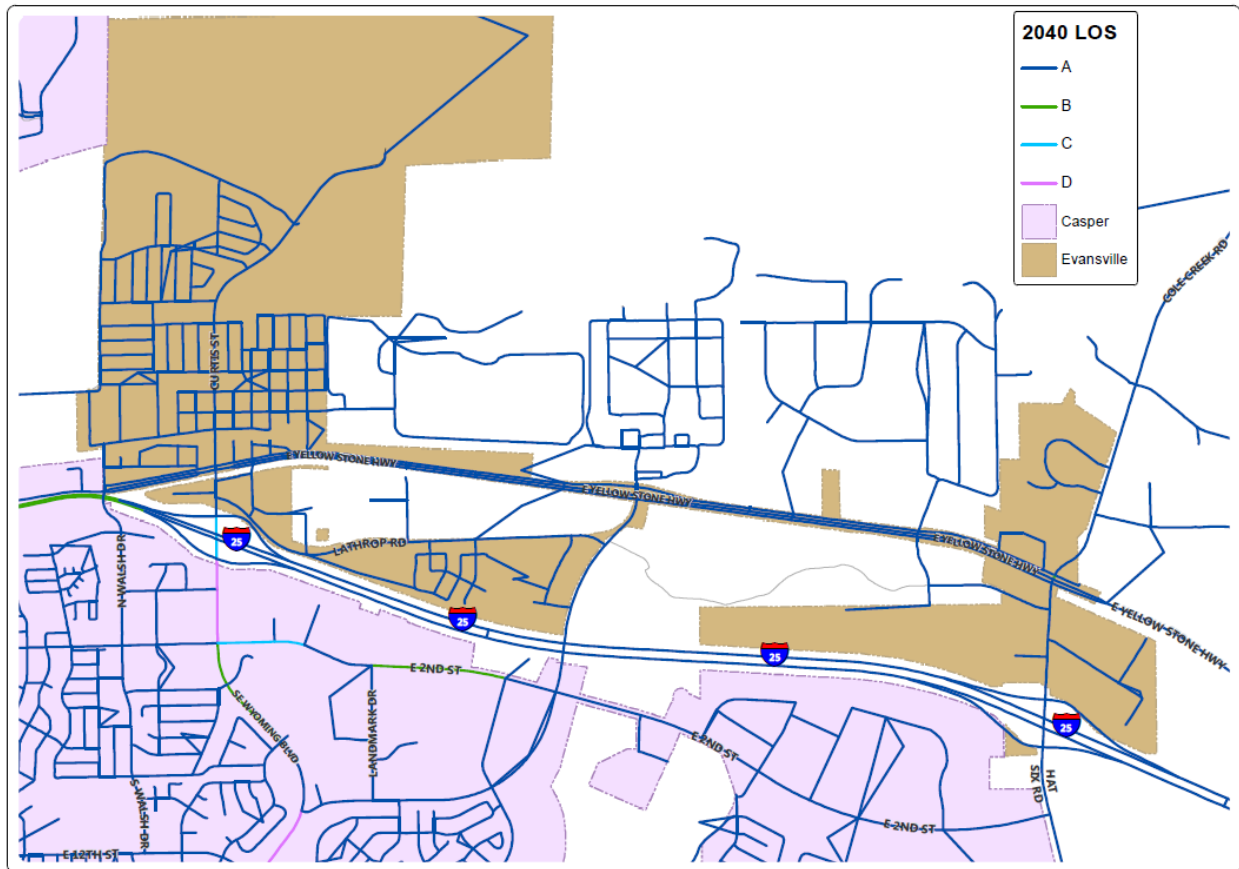


Figure 6 - Future Land Use Plan

Future Traffic Forecasts and Operations

The future land use concept plan was input into the Casper Regional Travel Demand Model to forecast travel in the year 2040. Figure 7 presents the forecasted levels of service with the planned growth and transportation changes. Evansville is not anticipated to experience any significant traffic congestion.

Figure 7 - Future Levels of Service



Level of service is a measure by which transportation professionals measure congestion levels on roadways and at intersections. Most cities and towns strive to achieve nothing worse than an LOS C or D. Nearly all roads in Evansville are anticipated to operate at LOS A in future years.

Roadway

A Free flow, low traffic density



B Minimum delay, stable traffic flow



C Stable condition, movements somewhat restricted due to higher volumes, but not objectionable for motorists



D Movements more restricted, travel speeds begin to decline



E Traffic fills capacity of the roadway, vehicles are closely spaced, incidents can cause serious breakdown



F Forced flow with demand volumes greater than capacity resulting in breakdown in traffic flow



Intersection

A Minimal delays



B Low levels of delay and queuing



Intermittently vehicles wait through more than one signal indication, occasionally backups may develop, traffic flow still stable and acceptable.



D Delays at intersections may become extensive, but enough cycles with lower demand occur to permit periodic clearance, preventing excessive backups. LOS D has historically been regarded as a desirable design objective in urban areas.



E Traffic fills intersection capacity, long queues and delays, many vehicles need to wait through more than one green indication



F Traffic demand exceeds capacity of intersection, very long queues and delays, most vehicles need to wait through more than one green indication



Citizens Perspective

The citizens of Evansville had opportunities to provide input to this plan. The first was given via a survey provided in July 2016 at a Car Wash. The second was during a meeting held on October 27th, 2016 at Evansville Community Center. During this meeting, citizens and MPO staff discussed existing needs in Evansville, future goals and objectives, and ordinances/regulations.



Survey Results

Logan Simpson issued a survey to gather feedback from residents on what they like best about Evansville and what concerns they had regarding transportation. Residents expressed an appreciation for the size of the Town, proximity to Casper, as well as the community and neighborhood parks. When asked what needed improving, they stated that the roads needed repairs and the town needed beautification, such as cleaning up of weeds and trash, and planting of trees. They also mentioned the large number of stray animals, the need for police, water/sewer issues, and the need for an access road from veteran's cemetery to the dump. Nearly 80% of residents rated their overall community as a 7 or above, and approximately 65% rated the transportation and roads as a 7 or above on a scale of 1 to 10.

Goals & Objectives

During the Community Workshop held on October 27, 2016, residents and staff discussed the goals for the Town and rated each of the following objectives based on their perceived importance. The objectives they rated as highly important are shown in **blue**, those with medium importance are shown in **green**, and those identified as being less important are shown in **red**.

Goal 1: Improve Mobility, Connectivity and Access for All People

Objectives

Improve connectivity across multiple modes including vehicular, transit, bicycle, and pedestrian

Institute regular consideration of pedestrian network connectivity in the review of development proposals and regulations

Expand use of local public transportation service to those areas in need

Address highly congested areas

Improve the current standard of paratransit and elderly transportation

Create a more comfortable, less intimidating pedestrian environment

Explore using innovation and technology

Provide safe and convenient facilities to establish cycling as a viable, safe and healthy alternative transportation option

Promote equitable service for all people

Seek opportunities to expand mobility options that are compatible with surrounding land uses

Identify opportunities for establishing multimodal nodes in the region

Create and implement context-sensitive design standards

Increase the use of alternative transportation modes such as vanpooling, carpooling and ridesharing

Goal 2: Enhance Quality of Life

Objectives

Improve the safety of all users of the system for all modes of travel

Maintain the cleanliness and good repair of transportation infrastructure

Prioritize transportation projects that enable active, healthy communities

Use transportation infrastructure to help create attractive communities

New projects should respect the character and plans of The Town of Evansville, and adjacent neighborhoods and communities

Security of the transportation system must be integrated into planning process

Prioritize environmentally sustainable projects using a sensible, balanced approach

Goal 3: Improve Economic Vitality

Objectives

Consider impacts on and opportunities for economic development in plans and projects

Improve access to jobs for both residents and employers

Allow for balanced and equitable growth

Improve access to education for all students within the County

Maintain and enhance real estate values across the County

Strengthen the connection between transportation and land use

Provide for the efficient movement of goods by both rail and truck

Goal 4: Implementation

Objectives

Adequately maintain the existing transportation network

Select new projects that can be efficiently funded and maintained

Prioritize projects into multiple tiers by recognizing the limited funding currently available and preparing for possible additional sources

Identify new sources of funding to grow local transportation dollars

Support a renewed trust in elected leaders and public confidence in the process through transparency, open communication, and collaboration across agencies

Encourage strong community engagement in the planning process and in the town's future growth and development

Goal 5: Promote Improved Safety

Objectives

Emphasize safety in all elements of transportation planning and incorporate the consideration of the context in which a project is proposed for safety enhancements for all funding programs

Address safety and efficiency issues at intersections

Optimize safety for all public transportation users

Select new projects that can be efficiently maintained

Opportunities

Residents were key in pointing out the opportunities and challenges to transportation in Evansville. The following points out some of the opportunities that are available to improve transportation and quality of life.

Connectivity

As the population in Evansville continues to grow, it becomes increasingly important that connectivity of roadway, pedestrian and bicycle connections between these communities be provided. These adjacent communities are currently updating their Major Streets Plans to address future growth and congestion which provides an opportunity for Evansville to connect with and expand on those proposed systems.

Functional Class

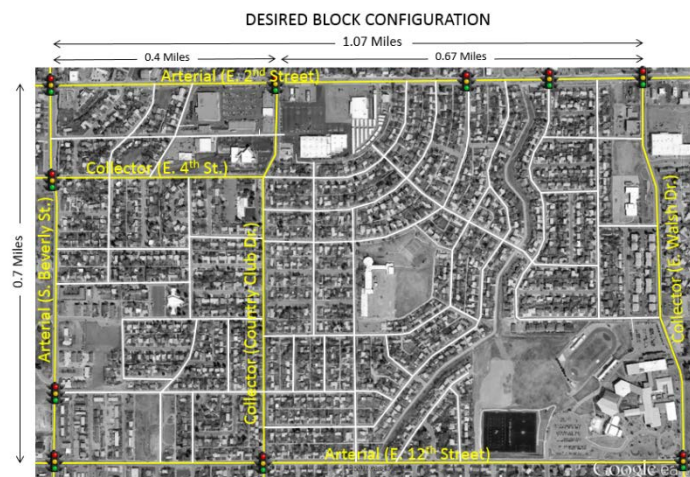
The functional classification of a roadway describes its primary purpose, such as moving traffic efficiently, providing local or regional connections, or providing land parcel access. Functional classification is based on traffic volumes, vehicle speeds, length of typical trips, road geometry, spacing between similar roads, and state/regional significance. Each functional classification has a corresponding set of design criteria, such as access spacing, design speed, and typical cross sections. Within the existing boundary of Evansville and the proposed expansion area, there is one Highway (I-25), an arterial road (Yellowstone Highway), a couple collector roads (Cole Creek Road and Lathrop Road), and a few existing roads which are recommended for reclassification to collector or arterial roads. As development increases, it is important that a system of arterial and collector roads be constructed in current undeveloped areas, to provide alternatives to the local roads. Planning for these roads now provides an opportunity to preserve the needed right-of-way before development occurs.

Land Use & Urban Form

Land use has five main characteristics: development density, mix of uses, urban form, urban design, and contiguousness of development (where developments are adjacent to each other and possibly connected). All of these characteristics have some level of impact on the number or length of trips on the arterial and collector roadway network. Density is the amount of development within a specific area. Higher levels of density are typically associated with availability of transit and a mix of uses. A mix of uses can enable more activities to be served by shorter or non-motorized trips. Urban form is established through a pattern of land development and sets the basis for the transportation infrastructure. Urban design offers an opportunity to make property more accessible for alternative modes, while providing aesthetic benefits. Contiguous development can increase density in an area and reduce travel. Each of these components is critical to integrating land use patterns and transportation facilities as the strategic framework of the community.

Block Configuration

Block development, layout and connectivity can significantly impact motorized and non-motorized traffic movement. When development within an area is comprised of multiple commercial or residential developments that do not interconnect, traffic from one side of the area must use the collector and arterial roads to access development on the opposite side of the area. Doing so increases traffic and congestion on the adjacent collector and arterial roads, thereby negatively impacting regional traffic, and making them less safe. As traffic and congestion increase, roads are widened, creating barriers between blocks and neighborhoods, and longer distances for bicyclists and pedestrians to cross. This lack of interconnectivity also forces pedestrians and bicyclists to travel on or adjacent to high speed, high volume arterial and collector roadways, which often makes them feel less safe.



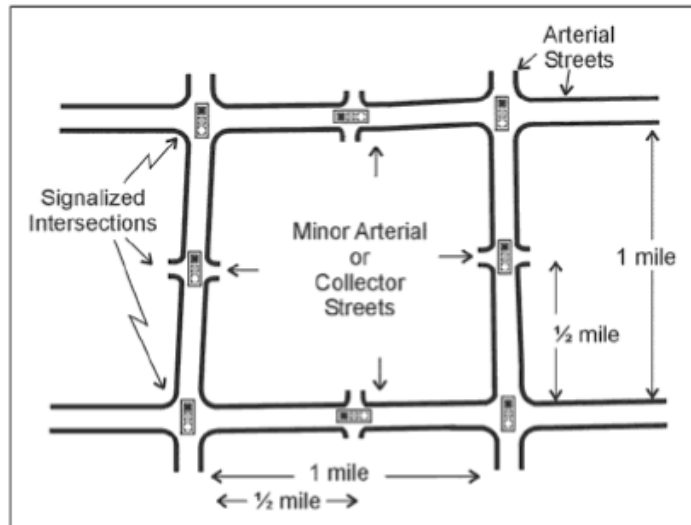
Conversely, providing a grid of interconnected local streets within a block, allows alternative ways for both vehicles and pedestrians to access nearby development within the block. Since this traffic does not have to use the arterial or collector streets, traffic volumes are lower, allowing narrower roads and shorter pedestrian and bicyclist crossing distances.

Roadway Spacing/Block Size

Implementing appropriate roadway spacing (the distance between parallel arterial roads) is important to avoid having closely-spaced intersections, which increases delay and congestion. Conversely, having arterial roads too far apart can force too much traffic to use collector and local roads. One-mile spacing is the accepted standard for urban arterial roadways with a supporting system of collector and local roadways.

Advantages of this spacing and block size include:

- Continuity of collector and local streets provides an alternative to arterials and serves shorter trips.
- A reasonable travel distance from a residence to a major street or arterial road reduces the vehicle-miles of travel (VMTs) on local streets and collectors, thereby improving the residential environment and reducing vehicle-pedestrian conflicts on local streets.
- Emergency response time may be improved, as less distance is traveled on local streets and smaller collector roads.
- It allows for ½ mile spacing of signalized intersections, which can provide more efficient traffic flow.
- It allows local streets to be designed with curves, traffic calming elements, etc. to actively discourage cut-through traffic, while supporting connectivity and continuity of movement for pedestrians and bicycles.
- Local bus service on arterial and collector streets places residents within a reasonable (1/4 mile) walking distance of a bus line.

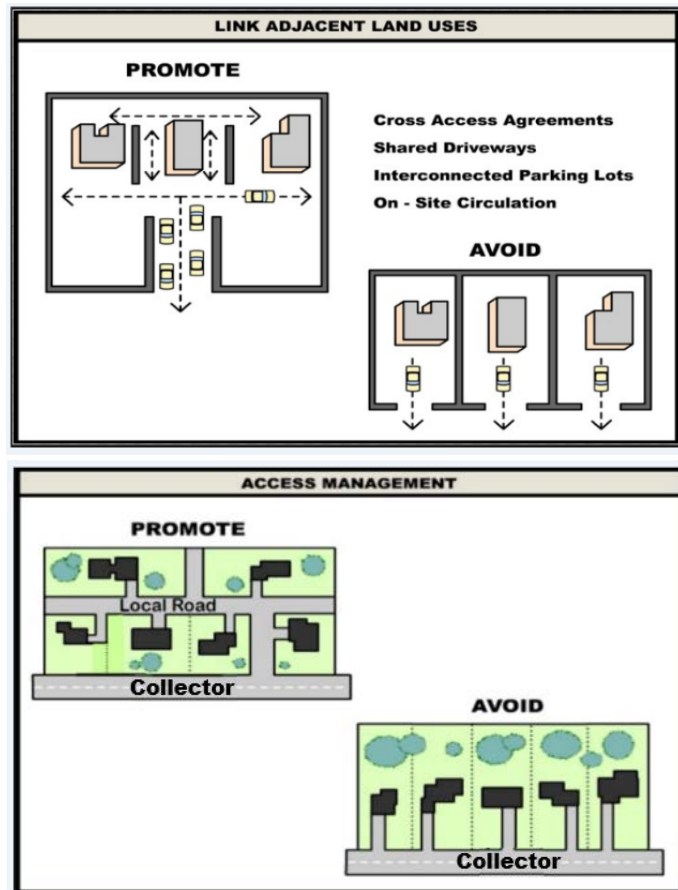


The local road network for new development in Evansville provides a good basis from which to create a grid, and it is recommended that some of those roadways be reclassified to a Collector functional classification. However, to reduce the impact of vehicle trips on the local roads, a larger network of collector and arterial roadways throughout the Evansville area is recommended.

Access Management

A minimal number of adequately-spaced access points preserves the capacity of a roadway and provides smoother traffic flow on arterial and collector roads. Limiting the number of driveways can also reduce the number of traffic accidents. A good access management policy considers the following: intersection spacing, driveway spacing, cross access/interconnected parking lots, turn lanes, and medians.

To further improve the capacity of the existing roadways, cross access and interconnection policies for both residential and commercial uses need to be established as part of the site plan review process and enforced. In these illustrations at right, providing access from every parcel to adjacent arterial or collector roads should be avoided. By requiring parcels to interconnect and have fewer, combined access points to arterial and collector roads, development would start to look like the “promote” illustrations. Support of these access management policies allows for vehicles to stay within the site to access multiple uses, reducing vehicle trips and impacts on the adjacent roadway.



Similarly, medians restrict the number of turning locations on arterial and collector roadways, thereby limiting the number of conflict points, preserving the smooth flow of traffic, and improving safety. Medians can retain the flow of traffic, but are not ideal for smaller, lower speed roadways where access to individual parcels is a higher priority.

Mix of Uses

Modern zoning typically results in residential, commercial, and industrial uses not being located close to each other, which promotes the use of the automobile. This

DISCOURAGED LAND USE FORM



increases traffic and makes communities much less friendly for bicyclists and pedestrians. Zoning that promotes a mix of uses and interconnected development can create high quality, walkable communities that preserve roadway and intersection capacity while increasing opportunities for alternative modes like bicycles and transit. The proposed new land use plan for Evansville takes this concept into account with the planned business park land use adjacent to the existing and planned residential uses.

ENCOURAGED LAND USE FORM



Complete Streets

Complete Streets are designed and operated to enable safe access and travel for all users and modes. Consideration for complete streets should be evaluated on the major roads such as Curtis Street and Platte Park Road.



The use of alternative modes is important to residents of Evansville, but the existing bike/pedestrian network and the existing Town Code are not representative of those desires. The Town of Evansville should establish standards for the bike/pedestrian network, including when and where sidewalks and bike paths should be provided, minimum design

standards and obstructions to avoid (i.e. drainage grates and electric poles within the sidewalk/path), bike/pedestrian requirements for residential and non-residential development (i.e. sidewalk connectivity through the site, bike parking spaces, etc...), typical/minimum/maximum block sizes, and complete street cross sections that account for all modes.

Recommendations

The following is a list of recommendations for improvement of the transportation system to meet the identified needs and take advantage of the opportunities.

Improve connectivity and access to Evansville

- Adopt a Major Streets Plan
 - Investigate additional options to traverse railroad (completed)
 - Metro Road extension connecting to Cemetery Road and Craig Thomas Blvd extension (underway)
 - Craig Thomas Blvd extension to Howard Street Extension in Bar Nunn
 - Amoco Road extension to Cole Creek Road
 - Platte Park Road extension to Amoco Road extension
 - Bryan Evansville Road from Bryan Stock Trail to Platte Park Road
 - Connect 5th Street and Mustang Trail parallel to the river, from Platte Park Road to Cole Creek Road
 - First Street extension to Craig Thomas Blvd
 - Wildcat Road from Blackmore Road to Hat Six Road
 - Mystery Bridge Road from E Yellowstone Hwy south to E/W connector
 - N/S connector between Wildcat Road and Yellowstone Hwy, west of Mystery Bridge Road
 - E/W connector south of Wildcat Road, north of I-25, from Wildcat Road to Hat Six Road
 - Evans Street extension to Cemetery Road
 - 7th Street extension to Evans Street extension
 - Connector northeast of the Amoco Road extension/Craig Thomas Blvd intersection, connecting the two roadways
 - Consider 1 mile spaced Major Roads

Better define the entryways to the City

- Develop a gateway theme along Curtis Street and Hat Six Road, north of I-25

Improve truck access along Curtis Street and US 20/26

- Evaluate the Yellowstone Highway/Craig Thomas Blvd intersection for signalization (WYDOT)
- Signalize the Lathrop/Curtis intersection (WYDOT)
- Eliminate offset of Luker Ln and Lathrop Rd through road realignment or other measures
- Consider the widening of Curtis Street
- Evaluate pavement sufficiency and widths for trucks along Lathrop Rd and Yellowstone Highway
- Widen Evans Street to accommodate trucks

Sidewalk and path connections

- Adopt an Active Transportation Plan
 - Regional pedestrian and bicycle connectivity
 - Recreational opportunities
 - Identify missing sidewalks/paths
 - Prioritize sidewalk/path needs
 - Complete Streets typical cross sections
 - Connectivity of sidewalks/paths to Casper
- Modify Town Code to require construction of sidewalks/paths with development

Road Repairs

- Update the road maintenance plan (underway)
 - Restriping
 - Resurfacing

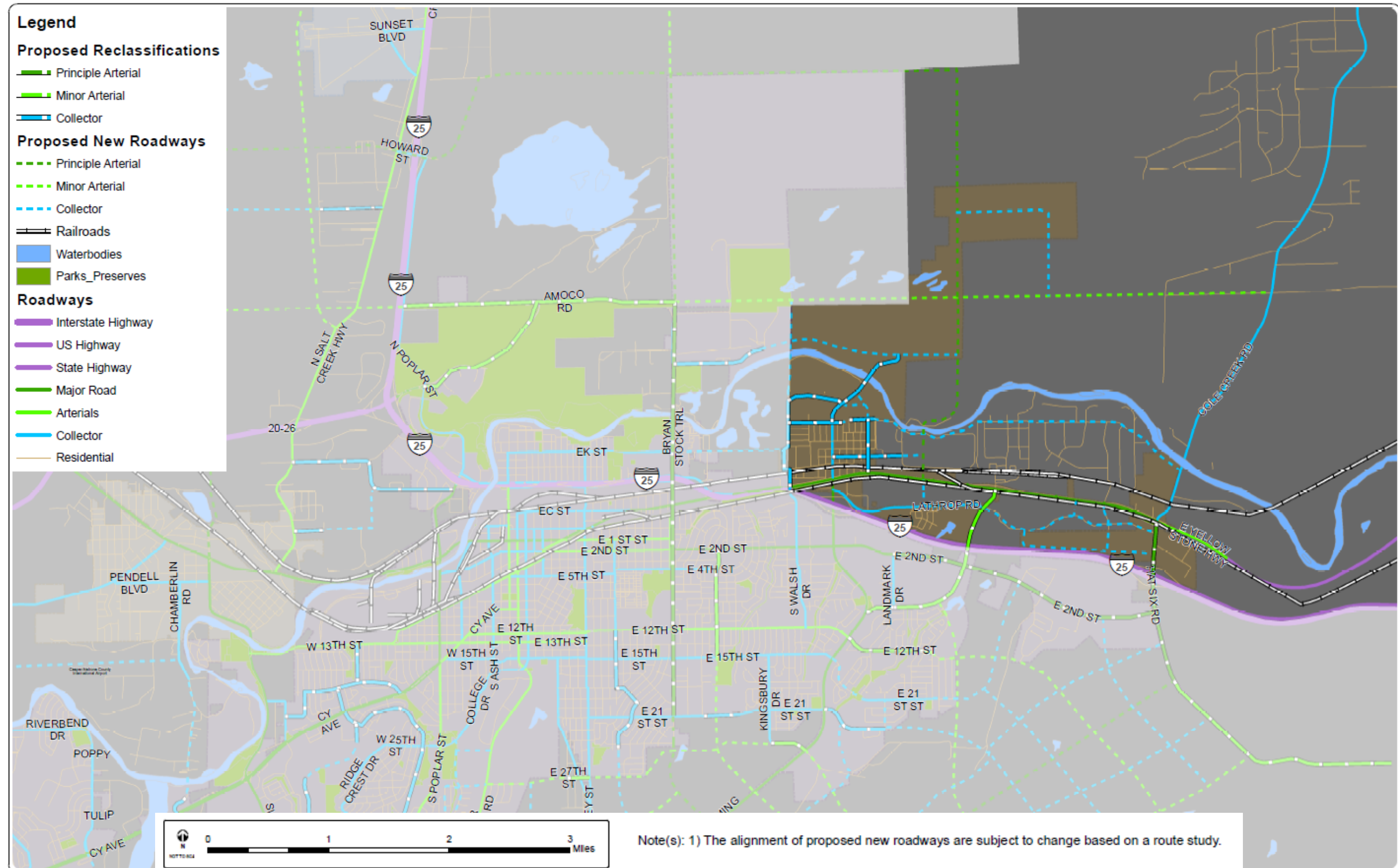
Major Streets Plan

The Major Street Plan serves as a guiding map for development of an adequate and properly-spaced network of arterials and collectors for Evansville, and to help achieve desired land use patterns and the benefits described in the previous sections. It shows where right-of-way should be preserved and provides a framework from which the Town can evaluate future infrastructure needs when approached by developers or when funding opportunities arise. As development expands to the north and east, it is recommended that additional Arterial and Collector Roadways be considered to meet the recommended one mile spacing standard.

The locations of new roadways shown on Figure 8, were primarily based on the MPO's adopted Long Range Transportation Plan and proposed plans for Evansville, while others were based on the extension of proposed roadways in Casper and Bar Nunn. New roadways in Casper were recommended based on existing uses, proposed new uses, topography, water infrastructure, public input, and the concepts of roadway spacing identified above.

The Major Street Plan does not identify future local roads since the location of those roadways will be determined by type and density of development to be constructed. However, in order to achieve a transportation network that supports the associated development, it is recommended that the concepts of driveway and intersection spacing, mix of uses and interconnected development be fully enforced. Planned future roadways can be seen on Figure 8.

Figure 8 - Major Street Plan



CHAPTER 4: MOVING FORWARD

Implementation

Implementation is the key to a successful plan and it is the responsibility of the entire community to guide the implementation. Elected officials and residents both play a part and all decisions ultimately guide the community's vision. Therefore, it is essential that the community remain focused on the successful implementation of this Plan.

Elected Officials are responsible for:

1. Making decisions consistent with this Plan;
2. Receiving and reviewing the annual reports presented by staff;
3. Determining the strategies to be included in the implementation work plan for the next year;
4. Allocating the necessary funding to implement the goals and strategies contained in this Plan; and
5. Collaborating with other governmental and non-governmental service providers.

The Community is responsible for:

1. Staying involved in local government and monitoring the decisions of elected officials, MPO staff and other governmental and quasi-governmental agencies.
2. Developers should follow the principles and goals of the 2005 Community Development Plan through design and implementation of their projects.
3. Governmental and quasi-governmental agencies should integrate the goals of the 2005 Community Development Plan into their strategic plans.

Short Term Prioritized List of Projects/Actions

- Adopt a Major Streets Plan
- Investigate additional options to traverse railroad (completed)
- Metro Road extension connecting to Cemetery Road and Craig Thomas Blvd extension (underway)
- Craig Thomas Blvd extension to Howard Street Extension in Bar Nunn
- Adopt an Active Transportation Plan
- Modify Town Code to require construction of sidewalks/paths with development
- Modify Town Code to incorporate key concepts of connectivity, functional classification, block configuration, and access management
- Eliminate offset of Luker Ln and Lathrop Rd through road realignment or other measures
- Consider the widening of Curtis Street
- Evaluate pavement sufficiency and widths for trucks along Lathrop Rd and Yellowstone Highway

- Widen Evans Street to accommodate trucks
- Update the road maintenance plan (underway)

Long Term Prioritized List of Projects/Actions

- Evaluate the Yellowstone Highway/Craig Thomas Blvd intersection for signalization (WYDOT)
- Signalize the Lathrop Road/Curtis Street intersection (WYDOT)
- Amoco Road extension to Cole Creek Road
- Platte Park Road extension to Amoco Road extension
- Bryan Evansville Road from Bryan Stock Trail to Platte Park Road
- Connect 5th Street and Mustang Trail parallel to the river, from Platte Park Road to Cole Creek Road
- First Street extension to Craig Thomas Blvd
- Wildcat Road from Blackmore Road to Hat Six Road
- Mystery Bridge Road from E Yellowstone Hwy south to E/W connector
- N/S connector between Wildcat Road and Yellowstone Hwy, west of Mystery Bridge Road
- E/W connector south of Wildcat Road, north of I-25, from Wildcat Road to Hat Six Road
- Evans Street extension to Cemetery Road
- 7th Street extension to Evans Street extension
- Connector northeast of the Amoco Road extension/Craig Thomas Blvd intersection, connecting the two roadways
- Develop a gateway theme along Curtis Street and Hat Six Road, north of I-25

Strategies

Implementation

This Plan outlines a number of recommendations to address the transportation needs of Evansville. The next step would be to evaluate those recommendations, determine which ones to move forward with, and prioritize them. Some items to consider during prioritization include time to complete, cost, level of benefit, and available funding.

Funding

Funding is a key component of any plan to get recommendations implemented. There are many avenues to obtain funds, some require modification of existing Town ordinances, while others require collaboration with others.

A source of funding that would support the town's vision of supporting bicyclists and pedestrians is the mobility fee. This fee is similar to the transportation impact



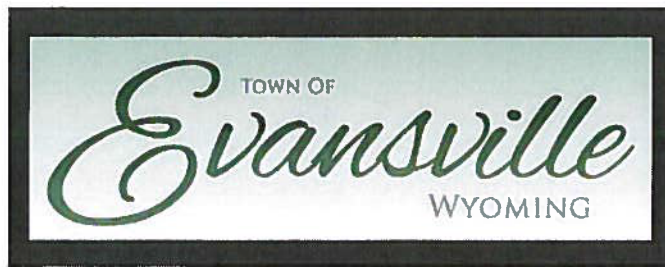
fee, but can be utilized for non-auto modes such as bikes and pedestrians. The Town should consider modifying the Town Code to incorporate mobility fees.

We have discussed in this plan that there is a need for non-residential uses to reduce traffic impacts and to promote biking and walking. Another advantage of non-residential uses, such as commercial uses, is the additional revenue that is generated by this type of business. The Town should consider incentives to promote land uses that generate revenue. This could require changes to the existing Town Code to support the vision.

Other mechanisms of funding that should be considered include the collaboration of businesses to create an Improvement District or the issuance of bonds.

Appendix A

Public Input



Take this survey to help guide the transportation plan and be entered to win a prize from local businesses.

Contact Information: Name [REDACTED] Email/Phone [REDACTED]

1. Where do you live?

☒ Evansville ☐ Other community (Where? _____.)

2. What do you like most about your community?

LIKE LOCATION

3. What aspects of the Town do you think need improving?

CLEANING UP YARDS & WEEDS

4. How can the MPO Staff get you involved in building a vision for the community?

☐ Have more community events like this one ☐ Discuss at Town Meetings
☐ Provide surveys in person or online
☐ Other (Note: _____.)

5. On a scale of 1 to 10, how happy are you overall with your community?

1----2----3----4----5----6----7----8----9----10
8

6. On a scale of 1 to 10, how happy are you with transportation and roads in your community?

1----2----3----4----5----6----7----8----9----10
5

7. Which modes of transportation do you use?

☒ Car/Truck ☐ Bus
☐ Bike ☐ Walk ☐ Carpool

8. How familiar are you with The Bus and available services?

☐ Very familiar ☒ I know there is a bus in town, but not the details. ☐ Not familiar
☐ Somewhat familiar ☐ I didn't know we had a bus.

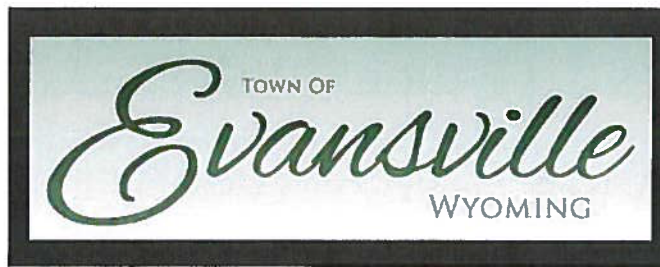
9. What, if any, do you feel are the main transportation issues within the community?

TRAIN UNDER/OVER PASS

10. Is there anything that you would like to mention about your community that has not been addressed in this survey?

TRAFFIC SIGNS NORTH OF BUTCH'S

THANK YOU FOR YOUR TIME!



7-23-16

Take this survey to help guide the transportation plan and be entered to win a prize from local businesses.

Contact Information: Name [REDACTED] Email/Phone [REDACTED]

1. Where do you live?

☒ Evansville ☐ Other community (Where? _____.)

2. What do you like most about your community?

_____.

3. What aspects of the Town do you think need improving?

sewer/water issues

4. How can the MPO Staff get you involved in building a vision for the community?

☒ Have more community events like this one ☒ Discuss at Town Meetings
☒ Provide surveys in person or online
☐ Other (Note: _____.)

5. On a scale of 1 to 10, how happy are you overall with your community?

1-----2-----3-----4-----5-----6-----7-----8-----9-----10

6. On a scale of 1 to 10, how happy are you with transportation and roads in your community?

1-----2-----3-----4-----5-----6-----7-----8-----9-----10

7. Which modes of transportation do you use?

☐ Car/Truck ☐ Bus
☐ Bike ☐ Walk ☐ Carpool

8. How familiar are you with The Bus and available services?

☐ Very familiar ☒ I know there is a bus in town, but not the details. ☐ Not familiar
☐ Somewhat familiar ☐ I didn't know we had a bus.

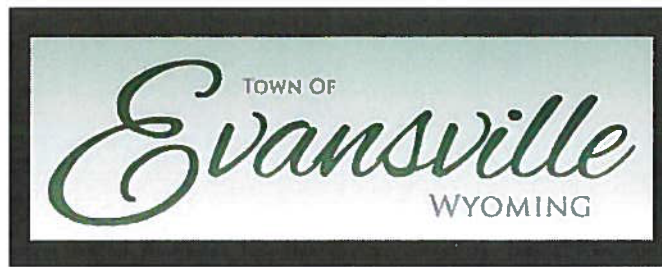
9. What, if any, do you feel are the main transportation issues within the community?

_____.

10. Is there anything that you would like to mention about your community that has not been addressed in this survey?

water/sewer issues in Reshow division

THANK YOU FOR YOUR TIME!



Take this survey to help guide the transportation plan and be entered to win a prize from local businesses.

Contact Information: Name [REDACTED] Email/Phone [REDACTED]

1. Where do you live?

☒ Evansville ☒ Other community (Where? Casper WY.)

2. What do you like most about your community?

The great people they are friendly, nice, and always try to help you out the best they can, and the law enforcement

3. What aspects of the Town do you think need improving?

Some what the Roads can be better but other than that it's good

4. How can the MPO Staff get you involved in building a vision for the community?

☒ Have more community events like this one ☐ Discuss at Town Meetings
☐ Provide surveys in person or online
☐ Other (Note: _____.)

5. On a scale of 1 to 10, how happy are you overall with your community?

1-----2-----3-----4-----5-----6-----7-----8-----9-----10

6. On a scale of 1 to 10, how happy are you with transportation and roads in your community?

1-----2-----3-----4-----5-----6-----7-----8-----9-----10

7. Which modes of transportation do you use?

☒ Car/Truck ☐ Bus
☐ Bike ☒ Walk ☐ Carpool

8. How familiar are you with The Bus and available services?

☐ Very familiar ☐ I know there is a bus in town, but not the details. ☒ Not familiar
☐ Somewhat familiar ☐ I didn't know we had a bus.

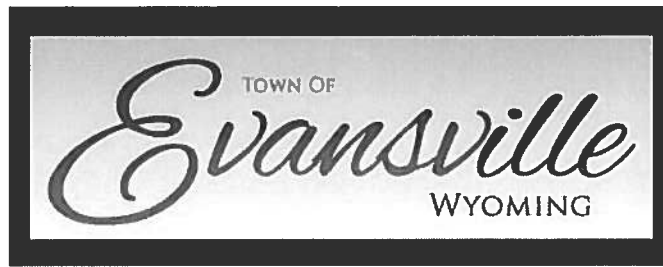
9. What, if any, do you feel are the main transportation issues within the community?

None

10. Is there anything that you would like to mention about your community that has not been addressed in this survey?

None

THANK YOU FOR YOUR TIME!



Take this survey to help guide the transportation plan and be entered to win a prize from local businesses.

Contact Information: Name [REDACTED] Email/Phone _____

1. Where do you live?

☒ Evansville _____ Other community (Where? _____.)

2. What do you like most about your community?

The Park _____

3. What aspects of the Town do you think need improving?

Road paint _____

4. How can the MPO Staff get you involved in building a vision for the community?

☒ Have more community events like this one _____ Discuss at Town Meetings
_____ Provide surveys in person or online
_____ Other (Note: _____.)

5. On a scale of 1 to 10, how happy are you overall with your community?

1-----2-----3-----4-----5-----6-----7-----8-----9-----10

6. On a scale of 1 to 10, how happy are you with transportation and roads in your community?

1-----2-----3-----4-----5-----6-----7-----8-----9-----10

7. Which modes of transportation do you use?

☒ Car/Truck _____ Bus
☒ Bike _____ ☒ Walk _____ Carpool

8. How familiar are you with The Bus and available services?

☒ Very familiar _____ I know there is a bus _____ Not familiar
☒ Somewhat familiar _____ in town, but not the _____ I didn't know we had
details. a bus.

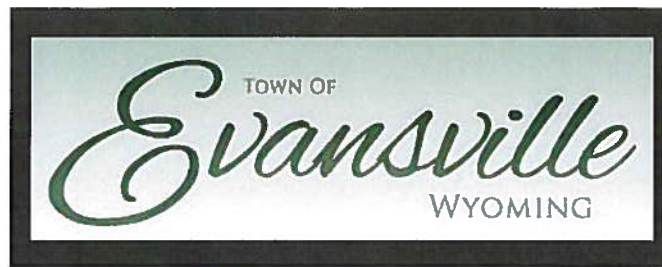
9. What, if any, do you feel are the main transportation issues within the community?

yellow lines _____

10. Is there anything that you would like to mention about your community that has not been addressed in this survey?

It's Great _____

THANK YOU FOR YOUR TIME!



Take this survey to help guide the transportation plan and be entered to win a prize from local businesses.

Contact Information: Name _____ Email/Phone _____

1. Where do you live?

☒ Evansville _____ Other community (Where? _____.)

2. What do you like most about your community?

The low speed limits

3. What aspects of the Town do you think need improving?

dividing lines in road.

4. How can the MPO Staff get you involved in building a vision for the community?

☒ Have more community events like this one _____ Discuss at Town Meetings
_____ Provide surveys in person or online
_____ Other (Note: _____.)

5. On a scale of 1 to 10, how happy are you overall with your community?

1----2----3----4----5----6----7----8----9---(10)

6. On a scale of 1 to 10, how happy are you with transportation and roads in your community?

1----2----3----4----5----6----7----8----9---(10)

7. Which modes of transportation do you use?

☒ Car/Truck _____ Bus
_____ Bike ☒ Walk _____ Carpool

8. How familiar are you with The Bus and available services?

_____ Very familiar ☒ I know there is a bus in town, but not the details. ☒ Not familiar
_____ Somewhat familiar _____ I didn't know we had a bus.

9. What, if any, do you feel are the main transportation issues within the community?

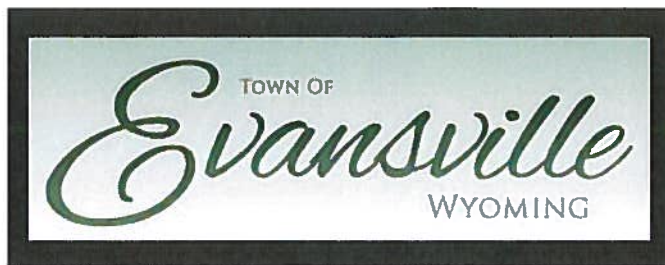
yellow lines dividing road

10. Is there anything that you would like to mention about your community that has not been addressed in this survey?

Note

THANK YOU FOR YOUR TIME!

①



Take this survey to help guide the transportation plan and be entered to win a prize from local businesses.

Contact Information: Name sa Email/Phone _____

1. Where do you live?

____ Evansville ____ Other community (Where? _____.)

2. What do you like most about your community?

_____.

3. What aspects of the Town do you think need improving?

_____.

4. How can the MPO Staff get you involved in building a vision for the community?

____ Have more community events like this one ____ Discuss at Town Meetings
____ Provide surveys in person or online
____ Other (Note: _____.)

5. On a scale of 1 to 10, how happy are you overall with your community?

1-----2-----3-----4-----5-----6-----7-----8-----9-----10

6. On a scale of 1 to 10, how happy are you with transportation and roads in your community?

1-----2-----3-----4-----5-----6-----7-----8-----9-----10

7. Which modes of transportation do you use?

____ Car/Truck ____ Bus
____ Bike ____ Walk ____ Carpool

8. How familiar are you with The Bus and available services?

____ Very familiar ____ I know there is a bus ____ Not familiar
____ Somewhat familiar in town, but not the details. ____ I didn't know we had a bus.

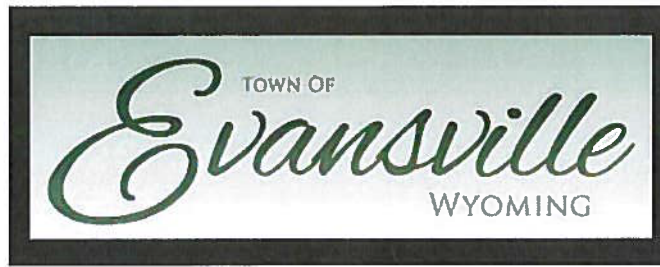
9. What, if any, do you feel are the main transportation issues within the community?

emergency transportation plan re: train hazards
work up WYDOT on cementing road + e/w access

10. Is there anything that you would like to mention about your community that has not been addressed in this survey?

_____.

THANK YOU FOR YOUR TIME!



Take this survey to help guide the transportation plan and be entered to win a prize from local businesses.

Contact Information: Name [REDACTED] Email/Phone [REDACTED]

1. Where do you live?

☒ Evansville ☐ Other community (Where? _____.)

2. What do you like most about your community?

Small, QUIET

3. What aspects of the Town do you think need improving?

"Too many loose cats" And Lots of Barking Dogs.

4. How can the MPO Staff get you involved in building a vision for the community?

☒ More community events like this one ☐ Provide surveys in person or online
☐ Discuss at Town Meetings
☐ Other (Note: _____.)

5. On a scale of 1 to 10, how happy are you overall with your community?

1----2----3----4----5----6---(7)---8----9----10

6. On a scale of 1 to 10, how happy are you with transportation and roads in your community?

1----2----3----4----5----6---(7)---8----9----10

7. Which modes of transportation do you use?

☒ Car/Truck ☐ Bus
☐ Bike ☐ Walk ☐ Carpool

8. How familiar are you with The Bus and available services?

☐ Very familiar ☐ I know there is a bus ☐ Not familiar
☒ Somewhat familiar ☐ in town, but not the ☐ I didn't know we had
details. a bus.

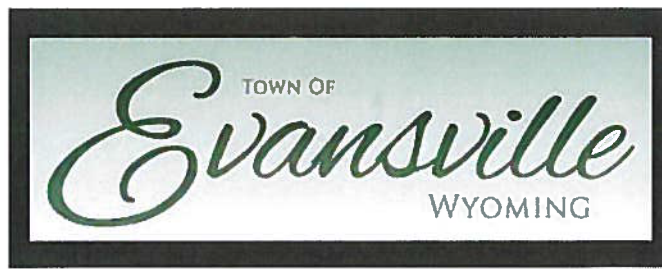
9. What, if any, do you feel are the main transportation issues within the community?

only way out is over Train Tracks

10. Is there anything that you would like to mention about your community that has not been addressed in this survey?

over all nice town

THANK YOU FOR YOUR TIME!



Take this survey to help guide the transportation plan and be entered to win a prize from local businesses.

Contact Information: Name [REDACTED] Email/Phone [REDACTED]

1. Where do you live?

☒ Evansville ☐ Other community (Where? _____.)

2. What do you like most about your community?

calm, quiet community

3. What aspects of the Town do you think need improving?

stray pets

4. How can the MPO Staff get you involved in building a vision for the community?

☐ Have more community events like this one

☐ Discuss at Town Meetings

☒ Provide surveys in person or online

☐ Other (Note: _____.)

5. On a scale of 1 to 10, how happy are you overall with your community?

1----2----3----4----5----6----7----8----9----10

6. On a scale of 1 to 10, how happy are you with transportation and roads in your community?

1----2----3----4----5----6----7----8----9----10

7. Which modes of transportation do you use?

☒ Car/Truck

☐ Bus

☐ Bike

☐ Walk

☐ Carpool

8. How familiar are you with The Bus and available services?

☐ Very familiar

☐ I know there is a bus

☐ Not familiar

☒ Somewhat familiar

in town, but not the details.

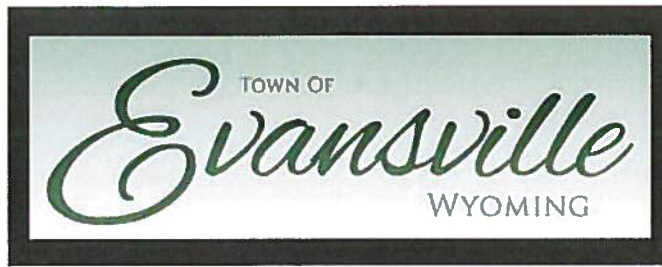
☐ I didn't know we had a bus.

9. What, if any, do you feel are the main transportation issues within the community?

Can't enter or exit town w/out going over railroad tracks

10. Is there anything that you would like to mention about your community that has not been addressed in this survey?

THANK YOU FOR YOUR TIME!



Take this survey to help guide the transportation plan and be entered to win a prize from local businesses.

Contact Information: Name [REDACTED] Email/Phone [REDACTED]

1. Where do you live?

☒ Evansville ☒ Other community (Where? _____.)

2. What do you like most about your community?

Great people, very friendly

3. What aspects of the Town do you think need improving?

Some of the Roads need repaired

4. How can the MPO Staff get you involved in building a vision for the community?

☒ More community events like this one ☐ Provide surveys in person or online
☒ Discuss at Town Meetings
☐ Other (Note: _____.)

5. On a scale of 1 to 10, how happy are you overall with your community?

1----2----3----4----5----6----7----8--9----10

6. On a scale of 1 to 10, how happy are you with transportation and roads in your community?

1----2----3----4----5----6--7----8----9----10

7. Which modes of transportation do you use?

☒ Car/Truck ☐ Bus
☐ Bike ☒ Walk ☐ Carpool

8. How familiar are you with The Bus and available services?

☐ Very familiar ☐ I know there is a bus ☐ Not familiar
☒ Somewhat familiar ☐ in town, but not the ☐ I didn't know we had
details. a bus.

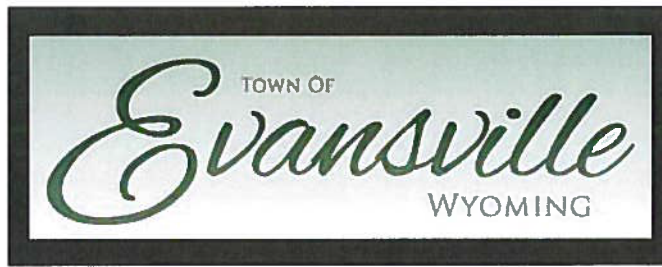
9. What, if any, do you feel are the main transportation issues within the community?

N/A

10. Is there anything that you would like to mention about your community that has not been addressed in this survey?

N/A

THANK YOU FOR YOUR TIME!



Take this survey to help guide the transportation plan and be entered to win a prize from local businesses.

Contact Information: Name [REDACTED] Email/Phone _____

1. Where do you live?
☒ Evansville _____ Other community (Where? _____.)

2. What do you like most about your community?

Small town _____.

3. What aspects of the Town do you think need improving?

Sidewalks (smile) _____.

4. How can the MPO Staff get you involved in building a vision for the community?

____ More community events like this one _____ Provide surveys in person or online
____ Discuss at Town Meetings
____ Other (Note: _____.)

5. On a scale of 1 to 10, how happy are you overall with your community?

1-----2-----3-----4-----5-----6-----7-----8-----9-----10

6. On a scale of 1 to 10, how happy are you with transportation and roads in your community?

1-----2-----3-----4-----5-----6-----7-----8-----9-----10

7. Which modes of transportation do you use?

☒ Car/Truck _____ Bus
____ Bike _____ Walk _____ Carpool

8. How familiar are you with The Bus and available services?

____ Very familiar _____ I know there is a bus _____ Not familiar
☒ Somewhat familiar _____ in town, but not the _____ I didn't know we had
details. a bus.

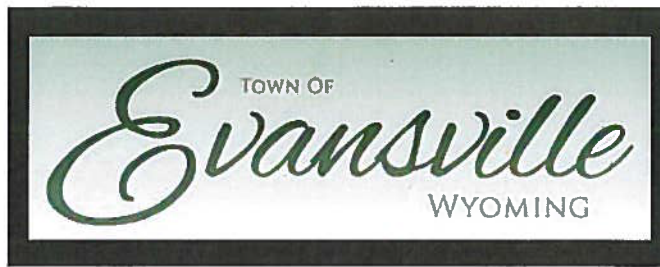
9. What, if any, do you feel are the main transportation issues within the community?

_____.

10. Is there anything that you would like to mention about your community that has not been addressed in this survey?

_____.

THANK YOU FOR YOUR TIME!



Take this survey to help guide the transportation plan and be entered to win a prize from local businesses.

Contact Information: Name [REDACTED] Email/Phone [REDACTED]

1. Where do you live?

☒ Evansville ☐ Other community (Where? _____.)

2. What do you like most about your community?

small town feel but close to Casper businesses.
Evansville's water tastes way better than Casper's water! Stay in our separate water system.

3. What aspects of the Town do you think need improving?

4. How can the MPO Staff get you involved in building a vision for the community?

☒ More community events like this one ☐ Provide surveys in person or online
☐ Discuss at Town Meetings
☐ Other (Note: _____.)

5. On a scale of 1 to 10, how happy are you overall with your community?

1----2----3----4----5----6----7----8----9----10

6. On a scale of 1 to 10, how happy are you with transportation and roads in your community?

1----2----3----4----5----6----7----8----9----10

7. Which modes of transportation do you use?

☒ Car/Truck ☐ Bus
☐ Bike ☒ Walk ☐ Carpool

8. How familiar are you with The Bus and available services?

☐ Very familiar ☐ I know there is a bus ☐ Not familiar
☒ Somewhat familiar ☐ in town, but not the details. ☐ I didn't know we had a bus.

9. What, if any, do you feel are the main transportation issues within the community?

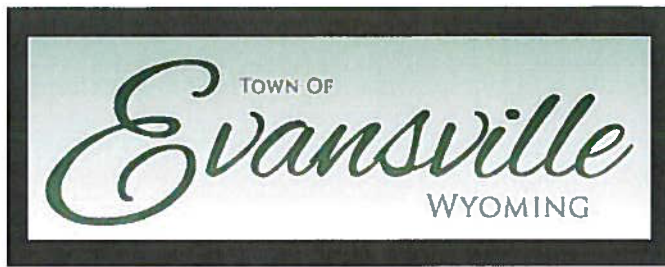
A road to by-pass trains. Ambulances can't enter or leave with long trains.
TRAFFIC backs up way into Casper - that affects intersection Curtis/Yellowstone Hwy.

10. Is there anything that you would like to mention about your community that has not been addressed in this survey?

spraying for mosquitos - but I think that is a county issue,
Attracting new businesses to relocate here.

THANK YOU FOR YOUR TIME!

THANK YOU FOR YOUR TIME!



Take this survey to help guide the transportation plan and be entered to win a prize from local businesses.

Contact Information: Name [REDACTED] Email/Phone [REDACTED]

1. Where do you live?

☒ Evansville ☐ Other community (Where? _____.)

2. What do you like most about your community?

We come together as a community

3. What aspects of the Town do you think need improving?

ROADS!

4. How can the MPO Staff get you involved in building a vision for the community?

☒ More community events like this one ☐ Provide surveys in person or online
☐ Discuss at Town Meetings
☐ Other (Note: _____.)

5. On a scale of 1 to 10, how happy are you overall with your community?

1----2----3----4----5----6----7----8----9----10

6. On a scale of 1 to 10, how happy are you with transportation and roads in your community?

1----2----3----4----5----6----7----8----9----10

7. Which modes of transportation do you use?

☒ Car/Truck ☐ Bus
☒ Bike Motorcycle ☐ Walk ☐ Carpool

8. How familiar are you with The Bus and available services?

☐ Very familiar ☐ I know there is a bus ☐ Not familiar
☒ Somewhat familiar ☐ in town, but not the details. ☐ I didn't know we had a bus.

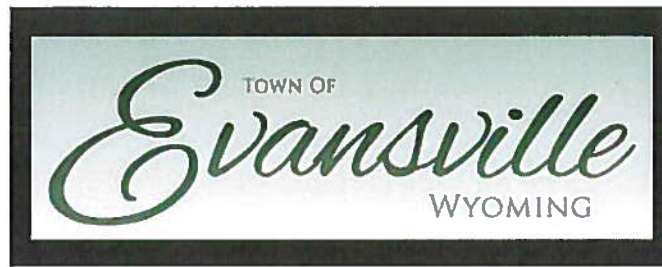
9. What, if any, do you feel are the main transportation issues within the community?

None

10. Is there anything that you would like to mention about your community that has not been addressed in this survey?

Make everyone stop at 4 ways 1/2 - Bring Back More officers on the Police department

THANK YOU FOR YOUR TIME!



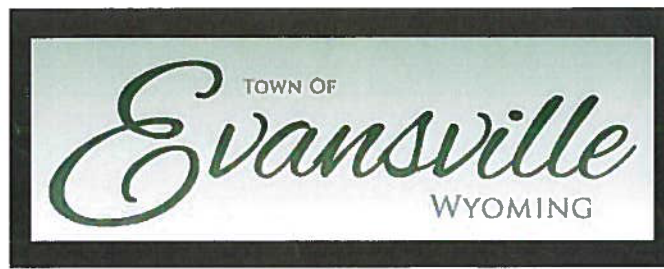
Take this survey to help guide the transportation plan and be entered to win a prize from local businesses.

Contact Information: Name [REDACTED] Email/Phone [REDACTED]

1. Where do you live?
☒ Evansville ☐ Other community (Where? _____.)
2. What do you like most about your community?
Small Community
3. What aspects of the Town do you think need improving?
Improvement on roads
4. How can the MPO Staff get you involved in building a vision for the community?
☐ Have more community events like this one ☐ Discuss at Town Meetings
☐ Provide surveys in person or online
☐ Other (Note: _____.)
5. On a scale of 1 to 10, how happy are you overall with your community?
1-----2-----3-----4-----5-----6-----7-----8-----9-----10
7
6. On a scale of 1 to 10, how happy are you with transportation and roads in your community?
1-----2-----3-----4-----5-----6-----7-----8-----9-----10
6
7. Which modes of transportation do you use?
☒ Car/Truck ☐ Bus
☐ Bike ☐ Walk ☐ Carpool
8. How familiar are you with The Bus and available services?
☐ Very familiar ☐ I know there is a bus ☒ Not familiar
☐ Somewhat familiar ☐ in town, but not the details. ☐ I didn't know we had a bus.
9. What, if any, do you feel are the main transportation issues within the community?

10. Is there anything that you would like to mention about your community that has not been addressed in this survey?
Love the town activities (garage sell) would love more

THANK YOU FOR YOUR TIME!

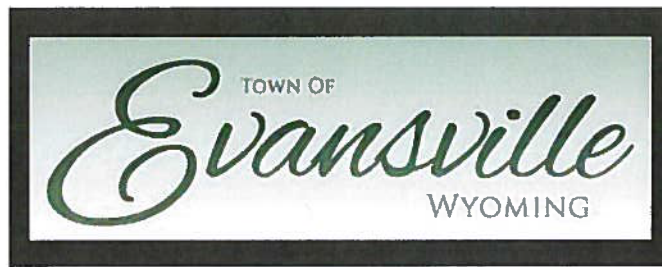


Take this survey to help guide the transportation plan and be entered to win a prize from local businesses.

Contact Information: Name [REDACTED] Email/Phone [REDACTED]

1. Where do you live? I purchased 60 Williams - Evansville
☒ Evansville ☒ Other community (Where? 1423 Heathrow Ave Casper, WY)
2. What do you like most about your community? → EVANSVILLE
No H.O.A.'s - Laid Back people - potential
3. What aspects of the Town do you think need improving?
Clean up of weeds / trash
4. How can the MPO Staff get you involved in building a vision for the community?
☒ More community events like this one ☐ Provide surveys in person or online
☒ Discuss at Town Meetings do traffic signs for notification
☐ Other (Note: to)
5. On a scale of 1 to 10, how happy are you overall with your community?
1----2----3----4----5--☒6----7----8----9----10
6. On a scale of 1 to 10, how happy are you with transportation and roads in your community?
1----2----3----4--☒5----6----7----8----9----10
7. Which modes of transportation do you use?
☒ Car/Truck ☐ Bus
☐ Bike ☐ Walk ☐ Carpool
8. How familiar are you with The Bus and available services?
☐ Very familiar ☐ I know there is a bus ☐ Not familiar
☐ Somewhat familiar ☐ in town, but not the details. ☒ I didn't know we had a bus.
9. What, if any, do you feel are the main transportation issues within the community?
Biggest problem and Safety concern is access in/out
When Trains have Crossing Blocked
10. Is there anything that you would like to mention about your community that has not been addressed in this survey?
I purchased a property here in Evansville
(over)

THANK YOU FOR YOUR TIME!



Take this survey to help guide the transportation plan and be entered to win a prize from local businesses.

Contact Information: Name [REDACTED] Email/Phone [REDACTED]

1. Where do you live?

☒ Evansville ☐ Other community (Where? _____.)

2. What do you like most about your community?

_____.

3. What aspects of the Town do you think need improving?

mail box pick up need to paved

4. How can the MPO Staff get you involved in building a vision for the community?

☒ More community events like this one ☐ Provide surveys in person or online
☒ Discuss at Town Meetings
☐ Other (Note: _____.)

5. On a scale of 1 to 10, how happy are you overall with your community?

1-----2-----3-----4-----5-----6-----7-----8-----9-----10

6. On a scale of 1 to 10, how happy are you with transportation and roads in your community?

1-----2-----3-----4-----5-----6-----7-----8-----9-----10

7. Which modes of transportation do you use?

☒ Car/Truck ☐ Bus
☐ Bike ☒ Walk ☐ Carpool

8. How familiar are you with The Bus and available services?

☐ Very familiar ☒ I know there is a bus ☐ Not familiar
☐ Somewhat familiar in town, but not the details. ☐ I didn't know we had a bus.

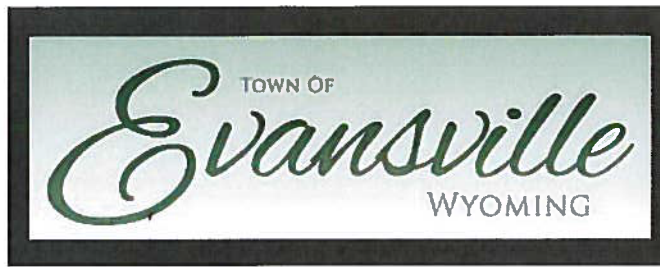
9. What, if any, do you feel are the main transportation issues within the community?

_____.

10. Is there anything that you would like to mention about your community that has not been addressed in this survey?

_____.

THANK YOU FOR YOUR TIME!



Take this survey to help guide the transportation plan and be entered to win a prize from local businesses.

Contact Information: Name [REDACTED] Email/Phone _____

1. Where do you live?

☒ Evansville _____ Other community (Where? _____.)

2. What do you like most about your community?

Small Town feel

3. What aspects of the Town do you think need improving?

Beautification x 100- no new trees have been planted on yellowston in 40 yr

4. How can the MPO Staff get you involved in building a vision for the community?

☒ More community events like this one _____ Provide surveys in person or online
____ Discuss at Town Meetings
____ Other (Note: _____.)

5. On a scale of 1 to 10, how happy are you overall with your community?

1---2---3---4---5---6---7---8---9---10
2

6. On a scale of 1 to 10, how happy are you with transportation and roads in your community?

1---2---3---4---5---6---7---8---9---10
8

7. Which modes of transportation do you use?

☒ Car/Truck _____ Bus
☒ Bike _____ Walk _____ Carpool

8. How familiar are you with The Bus and available services?

____ Very familiar ☒ I know there is a bus _____ Not familiar
____ Somewhat familiar in town, but not the details. _____ I didn't know we had a bus.

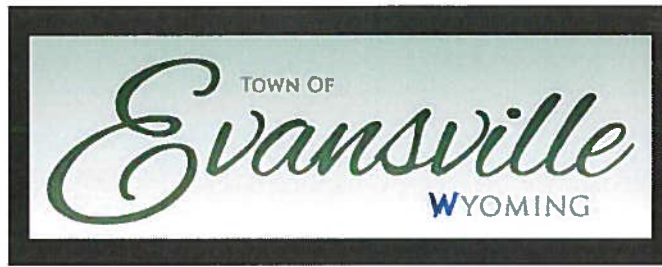
9. What, if any, do you feel are the main transportation issues within the community?

Loud Vehicles

10. Is there anything that you would like to mention about your community that has not been addressed in this survey?

Beautification

THANK YOU FOR YOUR TIME!



Take this survey to help guide the transportation plan and be entered to win a prize from local businesses.

Contact Information: Name [REDACTED] Email/Phone [REDACTED]

1. Where do you live?

☒ Evansville ☐ Other community (Where? _____.)

2. What do you like most about your community?

Everything - keep just as is. Donkey Park.

3. What aspects of the Town do you think need improving?

Police

4. How can the MPO Staff get you involved in building a vision for the community?

☒ Have more community events like this one ☐ Discuss at Town Meetings
☐ Provide surveys in person or online
☐ Other (Note: _____.)

5. On a scale of 1 to 10, how happy are you overall with your community?

1-----2-----3-----4-----5-----6-----7-----8-----9~~X~~-----10

6. On a scale of 1 to 10, how happy are you with transportation and roads in your community?

1-----2-----3-----4-----5~~X~~-----6-----7-----8-----9-----10

7. Which modes of transportation do you use?

☒ Car/Truck ☐ Bus
☐ Bike ☐ Walk ☐ Carpool

8. How familiar are you with The Bus and available services?

☐ Very familiar ☒ I know there is a bus in town, but not the details. ☐ Not familiar
☐ Somewhat familiar ☐ I didn't know we had a bus. friends drive me around.

9. What, if any, do you feel are the main transportation issues within the community?

very little

10. Is there anything that you would like to mention about your community that has not been addressed in this survey?

no

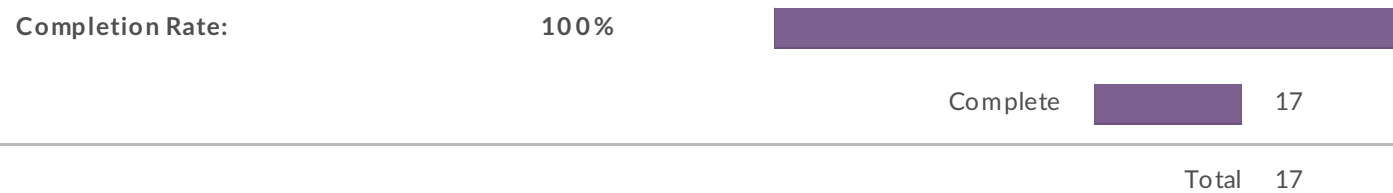
THANK YOU FOR YOUR TIME!

This report is filtered

Only show: Question "Where do you live?" is one of the following answers ("Evansville")

Report for MPO Plan Surveys

1. Response Counts

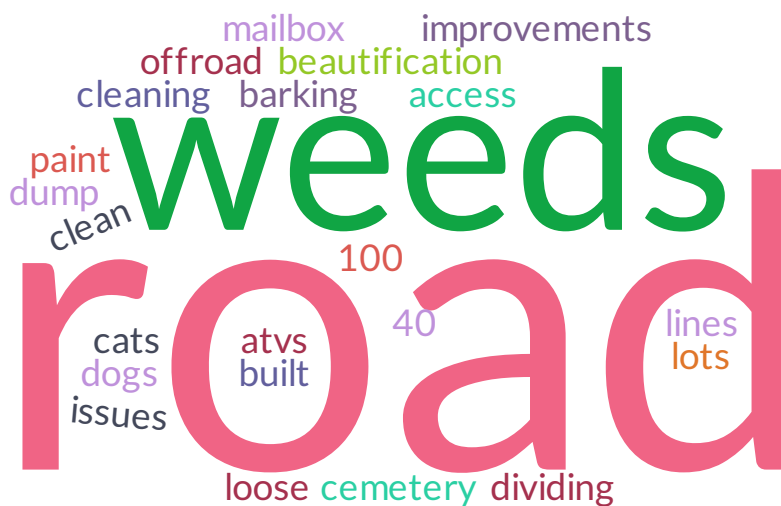


2. What do you like most about your community?



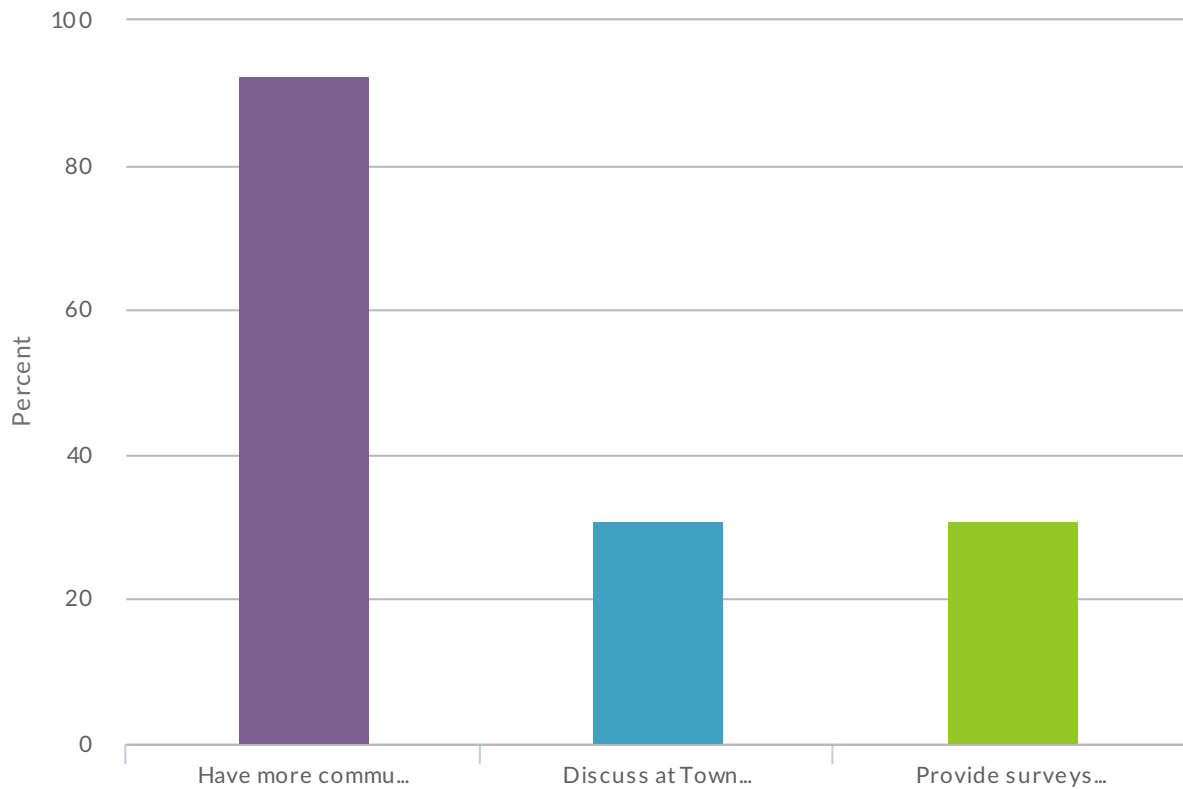
Count	Response
1	Calm, quiet community
1	Everything, keep just as is. Stoneking Park
1	Great people, very friendly
1	Like locations
1	No HOAs, laid back people, potential
1	Small community
1	Small town
1	Small town feel
1	Small town feel but close to Casper businesses. Evansville's water tastes way better than Casper's water! Stay in our separate water system.
1	Small, quiet
1	The Park
1	The low speed limits
1	We come together as a community

3. What aspects of the Town do you think need improving?



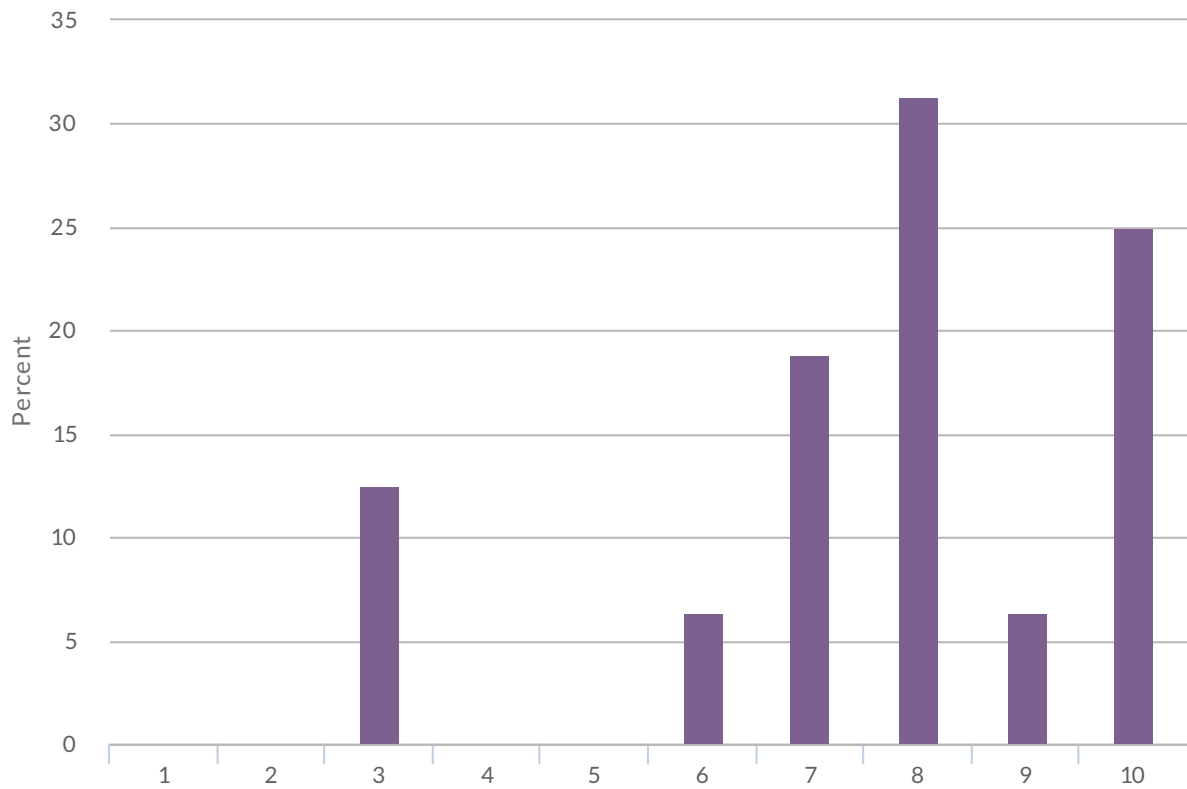
Count	Response
1	Access road built from vet cemetery to dump. Allow ATVs to ride offroad by river.
1	Beautification x 100, no new trees have been planted on Yellowstone in 40 years
1	Clean up of weeds/trash
1	Cleaning up yards and weeds
1	Dividing lines in the road
1	Improvements on roads
1	Mailbox pick-up needs to be paved
1	Police
1	Road paint
1	Roads
1	Sewer/water issues
1	Sidewalks (smell)
1	Some of the roads need repair
1	Stray pets
1	Too many loose cats and lots of barking dogs

4. How can the MPO Staff get you involved in building a vision for the community?

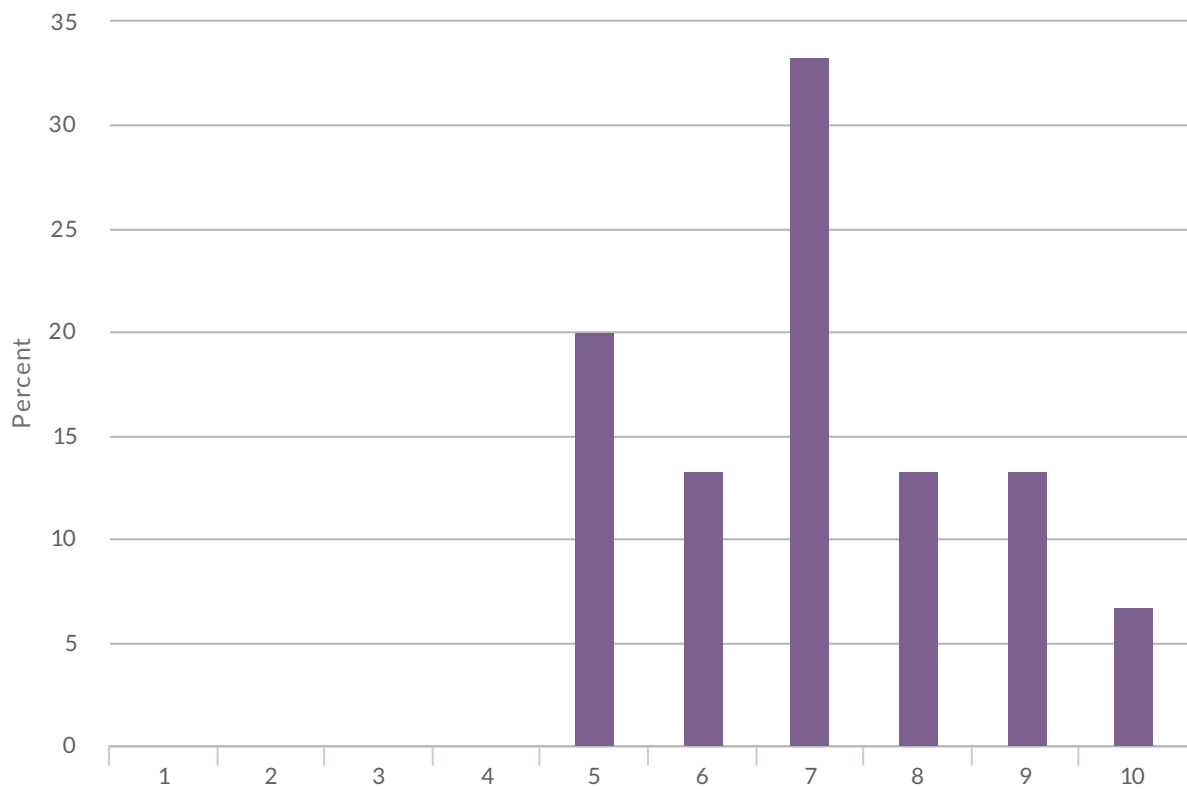


Value	Percent	Count
Have more community events like this one	92.3%	12
Discuss at Town Meetings	30.8%	4
Provide surveys in person or online	30.8%	4
Other:		Count
Total		0

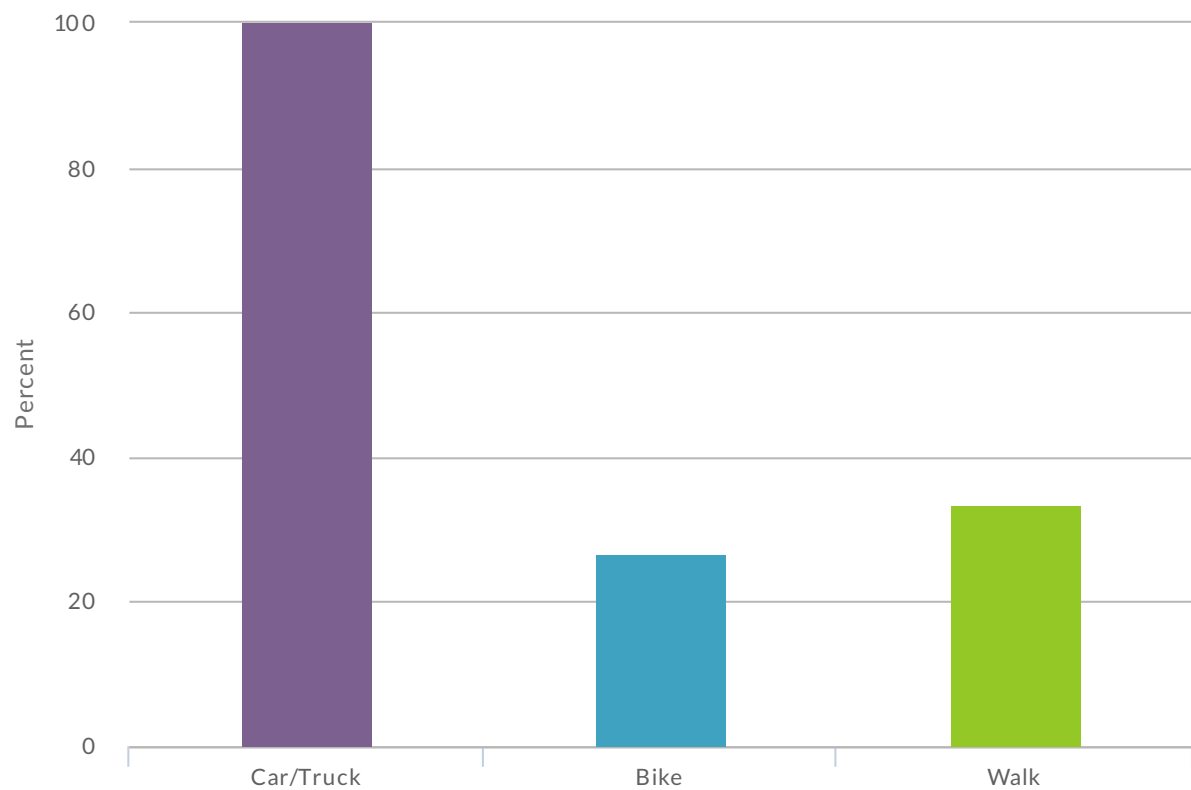
5. On a scale of 1 to 10, how happy are you overall with your community?



6. On a scale of 1 to 10, how happy are you with transportation and roads in your community?



7. Which modes of transportation do you use?



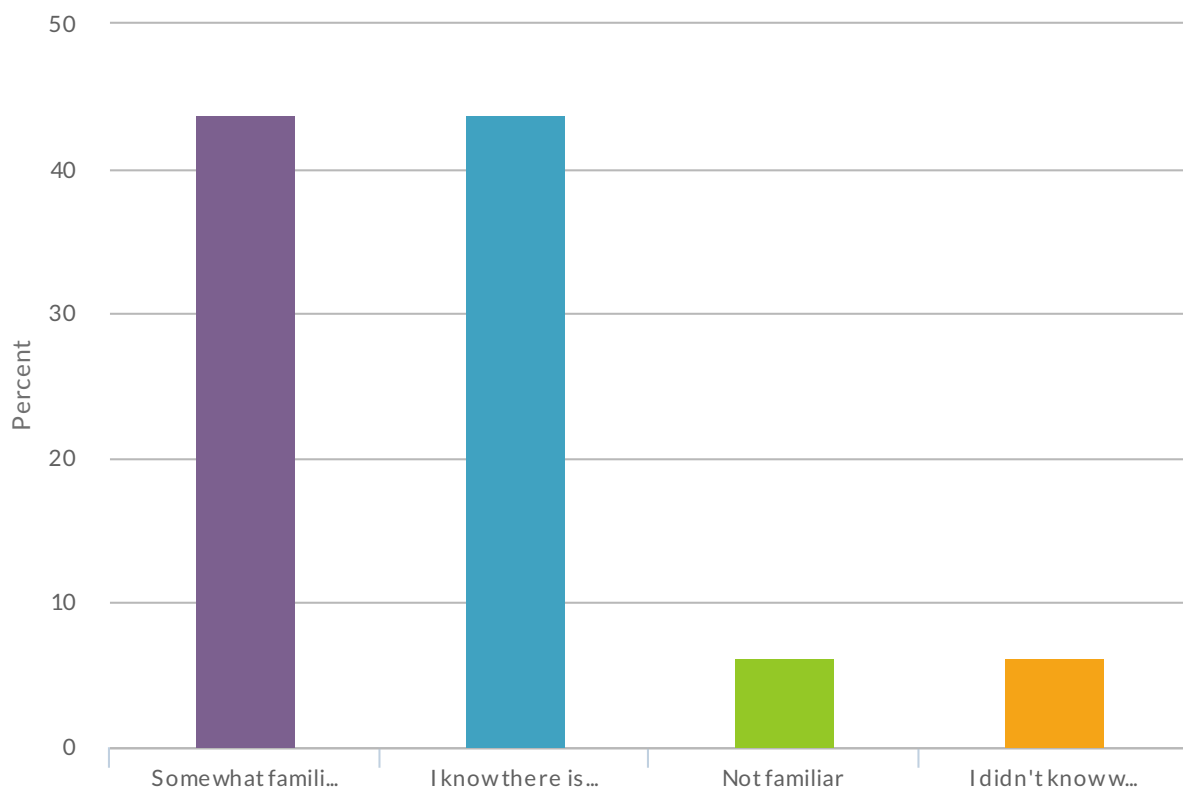
Value	Percent		Count
Car/Truck	100.0%	<div></div>	15
Bike	26.7%	<div></div>	4
Walk	33.3%	<div></div>	5


8. How likely would you be to utilize bus services if made available within Bar Nunn?

Percent

No data to display

9. Evansville/Mills: How familiar are you with The Bus and available services?



Value	Percent		Count
Somewhat familiar	43.8%		7
I know there is a bus in town, but not the details	43.8%		7
Not familiar	6.3%		1
I didn't know we had a bus	6.3%		1

10. What, if any, do you feel are the main transportation issues within the community?



Count	Response
1	A road to bypass trains. Ambulances can't enter or leave with long trains. Traffic backs up way into Casper, that affects intersection Curtis/Yellowstone Hwy
1	Biggest problem and safety concern is access in/out. When trains have crossing blocked
1	Can't enter or exit town without going over RR tracks
1	Loud vehicles
1	Only way out is over train tracks
1	Train under/over pass
1	Very little
1	Yellow Lines
1	Yellow lines dividing road
1	emergency transportation plan retrain hazards work with WYDOT in Cernentewy road and E/W access

11. Is there anything that you would like to mention about your community that has not been addressed in this survey?



Count	Response
1	Allow ATVs to ride off road by the river
1	Beautification
1	I purchased a property here in Evansville (over...)
1	Its great
1	Love the town activities (garage sale) would love more.
1	Make everyone stop at 4-way stops! Bring back more officers on the police department.
1	Overall, nice town
1	Spraying for mosquitoes, but I think that is a county issue. Attracting new businesses to relocate here.
1	Traffic signs north of Butch's
1	Water/sewer issues in Reshaw division